

**ORDINANCE NO. \_\_\_\_ SUPPLEMENTAL  
CONCERNING ELECTIONS - BOUNDARIES OF MUNICIPAL VOTING  
DISTRICTS**

**WHEREAS**, pursuant to Section C1-70-4 of the Charter, the City of Stamford Redistricting Commission submitted its final report to the Board of Representatives on March 29, 2022; and

**WHEREAS**, said report included a map showing proposed new boundaries of the municipal voting districts within the City of Stamford and a written description of the districts' boundaries; and

**WHEREAS**, the Special Redistricting Committee of the Board of Representatives met on April 6, 2022 and proposed certain changes to the recommendations of the final report, and it has been determined that it is in the best interest of the City of Stamford to accept said report with the changes recommended by the Committee; and

**WHEREAS**, said redistricting plan as submitted by the Redistricting Commission including the changes recommended by the Redistricting Committee is depicted on a map on file with the Board of Representatives, 4<sup>th</sup> Floor, Government Center, 888 Washington Boulevard, Stamford, Connecticut; and

**WHEREAS**, since the Redistricting Commission and the Redistricting Committee of the Board of Representatives relied upon the map to make its decisions and not the street descriptions, the map is controlling.

**NOW THEREFORE BE IT ORDAINED IN THE CITY OF STAMFORD THAT:**

1. Pursuant to Section C1-70-4 of the City of Stamford Charter, the municipal voting districts in the City of Stamford shall be as presented in the March 29, 2022 report of the Redistricting Commission as subsequently amended at the April 6, 2022 meeting of the Special Redistricting Committee.
2. Attached hereto and made a part hereof are the map of the districts and the written street descriptions of the new boundaries.
3. In the event that any future scrivener's errors in the street descriptions are subsequently discovered that do not materially affect voting districts, the Board of Representatives is authorized to correct such error(s) via resolution.

4. Notwithstanding anything to the contrary contained herein, if, prior to November 4, 2025, any elected official shall die, resign, be removed, cease to be a resident of the district from which he or she was elected, or otherwise become disqualified to hold office, so that such office shall become vacant and a successor shall be elected by the Board of Representatives under Section C1-80-2 of the City of Stamford Charter, any successor shall be chosen from the voting district of such elected official as it existed on November 2, 2021.
4. This ordinance shall take effect upon enactment.

### **District 1**

Canal Street at I-95 eastward to Elm Street, southward to Myrtle Avenue, northeastward to Frederick Street, southeastward to Shippan Avenue, southward to Cove Road, eastward to Soundview Avenue, southward to East Avenue, eastward to Van Buskirk Avenue, northward to Caldwell Avenue, eastward to Willowbrook Avenue, southward to Hale Street, eastward continuing on Martin Street to George Street, southward to Soundview Court, southward to Soundview Avenue, eastward to Cove Harbor, bounded southerly by Cove Harbor to Cummings Beach, easterly by Cove Harbor to Shippan Point, bounded westerly by Stamford Harbor to East Branch Rippowam River, continuing northerly to Jefferson Street, westerly to Canal Street, northerly to I-95. Includes Jack's Island, Vincent Island, and Caritas Island.

### **District 2**

Stamford/Greenwich border at I-95 eastward to Canal Street, southward to Dock Street, westward to Atlantic Street, southward to Henry Street, westward to Washington Boulevard, southward to Atlantic Street, southwestward to West Branch Rippowam River, bounded southerly by Stamford Harbor to Stamford/Greenwich border, northward to I-95.

### **District 3**

Washington Boulevard at Henry Street eastward to Atlantic Street, northward to Dock Street, eastward to Jefferson Street, eastward to East Branch Rippowam River, southward to Stamford Harbor, northward and westward to West Branch Rippowam River, northeastward to Atlantic Street, eastward to Washington Boulevard, northward to Henry Street.

### **District 4**

Frederick Street at Maple Avenue northeastward to William Street, eastward to Lockwood Avenue, northward to I-95, eastward to East Main Street, eastward to Seaside Avenue, southward to Cove Road, westward to Horton Street, southward to Robin Street, westward to George Street, northward to Martin Street, westward continuing on Hale Street to Willowbrook Avenue, northward to Caldwell Avenue, westward to Van Buskirk Avenue, southward to East Avenue, westward to Soundview Avenue, northward to Cove Road, westward to Shippan Avenue, northeastward to Frederick Street, northwestward to Maple Avenue.

### **District 5**

West Avenue at Burr Street eastward to Corbo Terrace, northward to Stillwater Avenue, eastward continuing on Smith Street to Mill River Street, southward to Main Street, eastward to Clinton Avenue, southward to Tresser Boulevard, westward to Rippowam River, southward to I-95, westward to Wilson Street, northward to Grenhart Road, westward to Roosevelt Avenue, northward to West Main Street, westward to West Avenue, northward to Burr Street.

## **District 6**

Mill River Street at West Broad Street eastward continuing on Broad Street to Summer Street, northward to Spring Street, eastward to Bedford Street, northward to Walton Place, eastward to Prospect Street, southward to Forest Street, eastward to Greyrock Place, northward and then eastward to Grove Street, northward to Highland Road, eastward to Lindale Street, southward to East Main Street, southwestward to Elm Street, southeastward to I-95, westward to Mill River, northward to Tresser Boulevard, eastward to Clinton Avenue, northward to Main Street, westward to Mill River Street, northward to West Broad Street.

## **District 7**

Elm Street at East Main Street northeastward to Lafayette Street, northward to Glenbrook Road, northeastward to Clovelly Road, southeastward 140 feet then northeastward 670 feet and northward 170 feet along an undefined census feature to Hamilton Avenue, eastward to Culloden Road, northward to Frankel Place, westward to Glenbrook Road, northward and northeastward on Glenbrook Road to Noroton River at Stamford/Darien border, southward on Noroton River for 270 feet, westward along an undefined census feature to Phillips Place, southeastward 380 feet to Noroton River, southward 3200 feet along Noroton River to undefined census feature, southwestward on undefined census feature to Courtland Hill Street, westward on Courtland Hill Street continuing on Hamilton Avenue, westward to Lawn Avenue, southward to Sherman Street, westward to Lincoln Avenue, southward continuing on Lockwood Avenue to William Street, westward to Maple Avenue, southward to Frederick Street, northwestward to Myrtle Avenue, southwestward to Elm Street, northwestward to East Main Street.

## **District 8**

Lawn Avenue at Hamilton Avenue eastward on Hamilton Avenue continuing 100 feet on Courtland Hill Street, southward then northeastward along an undefined census feature to the Stamford/Darien border, southward along the Noroton River, southward to Holly Pond, southward to Cove Harbor, southward to Soundview Avenue, westward to Soundview Court, northward to Robin Street, eastward to Horton Street, northward to Cove Road, eastward to Seaside Avenue, northward to East Main Street, westward to I-95, westward to Lockwood Avenue, northward continuing on Lincoln Avenue to Sherman Street, eastward to Lawn Avenue, northward to Hamilton Avenue. Includes Cove Island.

## **District 9**

Stamford/Greenwich border at Palmers Hill Road eastward to Stillwater Road, southward continuing on Stillwater Avenue, and eastward on West Broad Street to Oak Hill Street, southward to Pine Avenue, eastward to Schuyler Avenue, southward to Smith Street, westward to Stillwater Avenue, westward to Corbo Terrace, southward to Burr Street, westward to West Avenue, southward to West

Main Street, eastward to Roosevelt Avenue, southward to Grenhart Road, eastward to Wilson Street, southward to I-95, westward to Stamford/Greenwich border, northward to Palmers Hill Road.

#### **District 10**

Hubbard Avenue at Bridge Street eastward to Washington Boulevard, southward to Hoyt Street, eastward to Franklin Street, northward to Woodside Street, eastward to Summer Street, southward to Hoyt Street, eastward to Bedford Street, southward to North Street, eastward to Prospect Street, southward to Walton Place, westward to Bedford Street, southward to Spring Street, westward to Summer Street, southward to Broad Street, westward continuing on West Broad Street to Mill River Street, southward to Smith Street, westward to Schuyler Avenue, northward to Pine Avenue, westward to Oak Hill Street, northward to West Broad Street, westward to Rachelle Avenue, northward to West North Street, eastward to Hubbard Avenue, northward to Bridge Street.

#### **District 11**

Oaklawn Avenue at Old North Stamford Road eastward to Clifford Avenue, southward to Rome Place, eastward to Lindsey Avenue, southward to South Lindsey Avenue, southward to Crane Road North, eastward to Strawberry Hill Avenue, southward to Strawberry Hill Court, westward to Morgan Street, southward 475 feet to an undefined census feature, continuing on undefined census feature eastward 250 feet, southward 150 feet, eastward 175 feet, southward 300 feet, westward 200 feet, southward 175 feet, eastward 275 feet, northward 125 feet, eastward 250 feet, southward 200 feet, westward 225 feet, southward 300 feet, eastward 200 feet, southward 100 feet, eastward 200 feet to Strawberry Hill Avenue, southward continuing on Grove Street, southward to Greyrock Place, westward to Forest Street, westward to Prospect Street, northward to North Street, westward to Bedford Street, northwestward to Old North Stamford Road, northward to Oaklawn Avenue.

#### **District 12**

Morgan Street at Strawberry Hill Court eastward to Strawberry Hill Avenue, northward 1400 feet to an undefined census feature, eastward 650 feet on undefined census feature, southward 190 feet, southwestward 120 feet, eastward 325 feet to Mayflower Avenue, northward to Plymouth Road, eastward to Hope Street, southward continuing on Glenbrook Road and Lafayette Street, southward to East Main Street, westward to Lindale Street, northward to Highland Road, westward to Grove Street, northward to Strawberry Hill Avenue, northward 175 feet to an undefined census feature, continuing on undefined census feature westward 200 feet, northward 100 feet, westward 200 feet, northward 300 feet, eastward 225 feet, northward 200 feet, westward 250 feet, southward 125 feet, westward 275 feet, northward 175 feet, eastward 200 feet, northward 300 feet, westward 175 feet, northward 150 feet, westward 250 feet to Morgan Street, northward to Strawberry Hill Court.

### **District 13**

Wildwood Road at Long Ridge Road northeastward to Hunting Ridge Road, southward to Long Ridge Road, southward to Chestnut Hill Road, eastward to Webbs Hill Road, southward to Long Ridge Road, southward to Stillwater Road, southward to Bridge Street, eastward to Hubbard Avenue, southward to West North Street, westward to Rachelle Avenue, southward to West Broad Street, westward to Stillwater Avenue, northwestward to Palmers Hill Road, westward to Stamford/Greenwich border, northwestward 13,000 feet along border to an undefined census feature, northeastward 2500 feet to Mianus River, northward to Merritt Parkway, eastward to Riverbank Road, northward to Bangall Road, northeastward 100 feet along Bangall Road, westward 100 feet along Bangall Road to Riverbank Road, northwestward to East Branch Mianus River, northward 1700 feet to an undefined census feature, northward 1000 feet to East Branch Mianus River, northward to Wildwood Road, northeastward to Long Ridge Road.

### **District 14**

Stillwater Road at Long Ridge Road southward to Brook Run Lane, northward to Lakeview Drive, eastward to High Ridge Road, southward to High Clear Drive, eastward to Dann Drive, southward to Turner Road, eastward to Pepper Ridge Road, southward to Hirsch Road, eastward to Newfield Avenue, southward to Dorlen Road, southwestward to Oaklawn Avenue, westward to Old North Stamford Road, southward to Bedford Street, southward to Hoyt Street, westward to Summer Street, northward to Woodside Street, westward to Franklin Street, southward to Hoyt Street, westward to Washington Boulevard, northward to Bridge Street, westward to Stillwater Road, northward to Long Ridge Road.

### **District 15**

Newfield Avenue at Todd Lane eastward continuing on Pershing Avenue, eastward to Haig Avenue, northward to St Charles Avenue, eastward 75 feet to an undefined census feature, continuing on undefined census feature southward 225 feet, southeastward 675 feet, southward 550 feet, northeastward 425 feet, southeastward 600 feet, southward 1800 feet to Toms Road, eastward to Hope Street, southward to Union Street, eastward to Kirkham Place, southward to Church Street, eastward to Glenbrook Road, southward to Frankel Place, eastward to Culloden Road, southward to Hamilton Avenue, westward 540 feet to an undefined census feature, continuing on undefined census feature southward 170 feet, southwestward 670 feet to Clovelly Road, northwestward to Glenbrook Road, southwestward to Hope Street, northward to Plymouth Road, westward to Mayflower Avenue, southward 185 feet to an undefined census feature, continuing on undefined census feature westward 325 feet, northeastward 120 feet, northward 190 feet, westward 650 feet to Strawberry Hill Avenue, northward to Crane Road, westward to South Lindsey Avenue, northward continuing on Lindsey Avenue to Rome Place, westward to Clifford

Avenue, northward to Oaklawn Avenue, eastward to Dorlen Road, northeastward to Newfield Avenue, northward to Hirsch Road, westward to Pepper Ridge Road, northward to Turner Road, eastward to Newfield Avenue, northward to Todd Lane.

#### **District 16**

Rippowam River at Cedar Heights Road eastward to High Ridge Road, southward to Vine Road, eastward to Kerr Road, northward to Club Road, eastward to Newfield Avenue, southward to Turner Road, westward to Dann Drive, northward to High Clear Drive, westward to High Ridge Road, northward to Lakeview Drive, westward to Brook Run Lane, southward to Long Ridge Road, northward 5325 feet along Long Ridge Road, eastward 240 feet to the Rippowam River, northward to Cedar Heights Road.

#### **District 17**

Knox Road at Newfield Avenue eastward to Upper Haig Avenue, northward to Weed Hill Avenue, eastward to Hope Street, northeastward to Mead Street, eastward to Highview Avenue, southward to Cerretta Street, eastward to Garland Drive, southward to Camp Avenue, eastward to Noroton River, southward to Glenbrook Road, southwestward continuing on Church Street to Kirkham Place, northward to Union Street, westward to Hope Street, northward to Toms Road, westward 350 feet to an undefined census feature, continuing on undefined census feature northward 1800 feet, northwestward 600 feet, southwestward 425 feet, northward 550 feet, northwestward 675 feet, northward 225 feet, to St. Charles Avenue, westward to Haig Avenue, southward to Pershing Avenue, westward to Todd Lane, westward to Newfield Avenue, northward to Knox Road.

#### **District 18**

Rippowam River at Stamford/Darien border following border southward then eastward to Stamford/Darien/New Canaan border, the southwestward to Noroton River, southward to Camp Avenue, westward to Garland Drive, northward to Cerretta Street, westward to High View Avenue, northward to Mead Street, westward to Hope Street, southwestward to Weed Hill Avenue, westward to Upper Haig Avenue, southward to Knox Road, westward to Newfield Avenue, southward to Club Road, westward to Kerr Road, southward to Vine Road, northwestward to High Ridge Road, northward to Merritt Parkway, eastward to Newfield Avenue, northward to Lakeside Drive, northward to the west side of North Stamford Reservoir, northward to Rippowam River, northward to Stamford/Darien border.

#### **District 19**

Stamford/Greenwich/New York State border at Taconic Road northeastward along state line to High Ridge Road, southward to Briar Brae Road, westward to Rock Rimmon Road, southeastward to Scofieldtown Road, southward to Chestnut Hill Road, southwestward to Long Ridge Road, northward to Hunting Ridge Road,

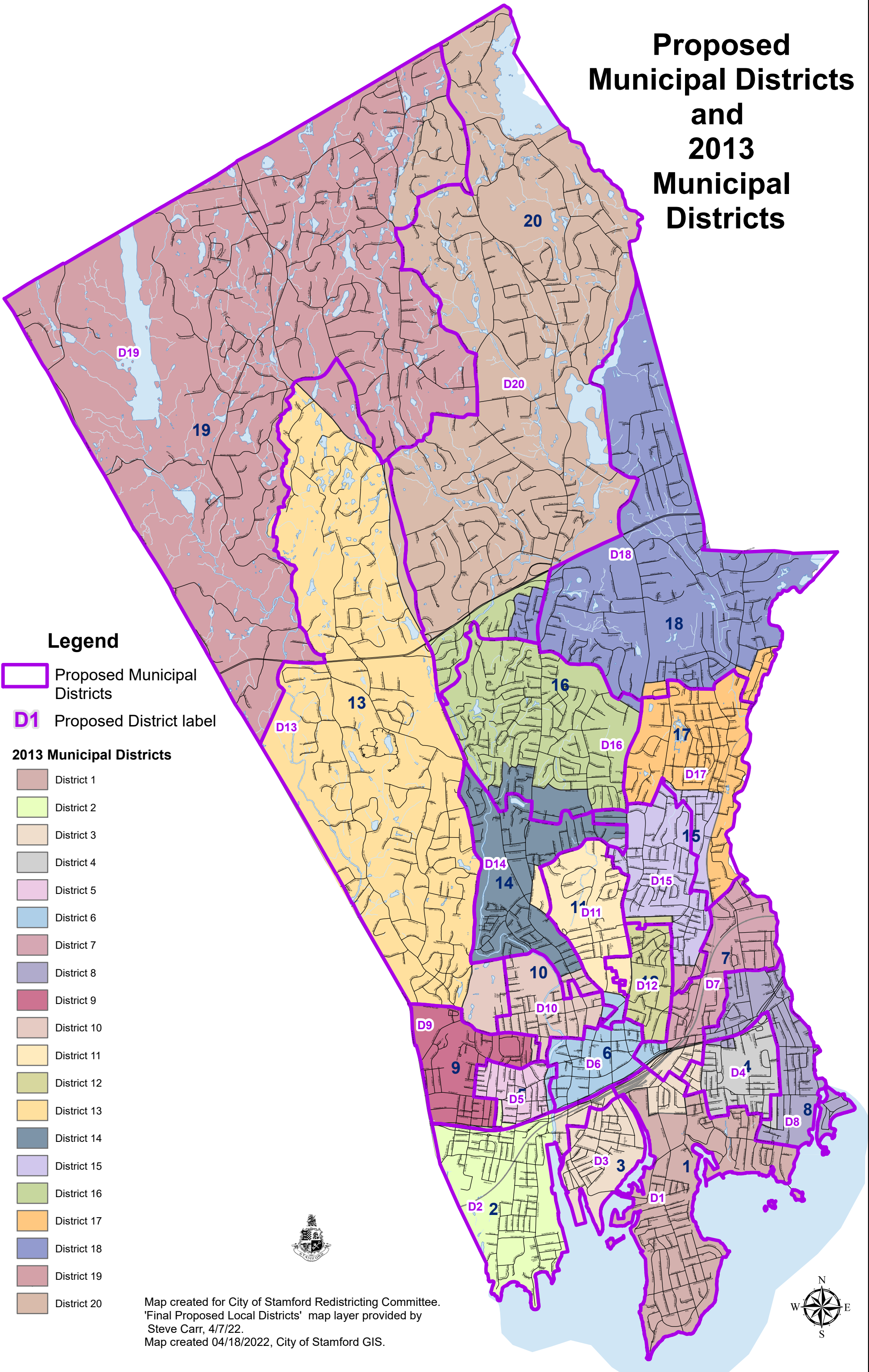
northward to Wildwood Road, westward to East Branch Mianus River, southward 6750 feet to an undefined census feature, southward 1000 feet to East Branch Mianus River, southwestward to Riverbank Road, southward to Bangall Road, eastward 100 feet along Bangall Road, southward to Riverbank Road, southward to the Merritt Parkway, westward to the Mianus River, southward to an undefined census feature to the Stamford/Greenwich border, northwestward along Stamford/Greenwich border to the Stamford/New York State border.

## **District 20**

Stamford/New York State border at High Ridge Road northeastward along state line to New Canaan border, southward along Stamford/New Canaan border through the Laurel Reservoir, southward following the Stamford/New Canaan border along the Rippowam River to the northern point of the North Stamford reservoir, southward along the west side of the North Stamford Reservoir to Lakeside Drive, southward to Newfield Avenue, southward to Merritt Parkway, westward to High Ridge Road, southward to Cedar Heights Road, westward to the Rippowam River, southward 4625 feet following the Rippowam River, westward 240 feet to Long Ridge Road, northward to Webbs Hill Road, northward to Chestnut Hill Road, eastward to Scofieldtown Road, northward to Rock Rimmon Road, northward to Briar Brae Road, northeastward to High Ridge Road, northward to Stamford/New York State border



# Proposed Municipal Districts and 2013 Municipal Districts



Map created for City of Stamford Redistricting Committee.  
'Final Proposed Local Districts' map layer provided by  
Steve Carr, 4/7/22.  
Map created 04/18/2022, City of Stamford GIS.