

CITY OF STAMFORD

March 9th

DEPARTMENT FUNCTIONS

DEPARTMENT FUNCTIONS

Department Function

The mission of the E.G. Brennan Golf Course is to provide the residents of Stamford and areas neighboring a preeminent public golf course. E.G. Brennan Golf Course is an 18 Hole Golf Course with a practice chipping/putting green, a full service restaurant and a clubhouse containing a golf simulator, lockers, and golf shop. Amidst a competitive market for public golf, the aim is for continually improving course conditions while being both fiscally responsible and environmentally mindful.

PROGRAM OVERVIEW AND HIGHLIGHTS

PROGRAM OVERVIEW AND HIGHLIGHTS

- Rounds and revenue are up
- Tee leveling project complete with favorable comments from golfing public
- Re-routing of holes enhanced flow of course and increased pace of play
- Alternate revenue streams i.e. parking lot rental
- Establish a tree maintenance program, including pruning and removal of dead and dangerous trees
- Paving of cart path to #3 tee
- Growing of our fund balance
- Zody's 19th Hole Restaurant expansion and lease renewal

CHALLENGES

CHALLENGES

- Aging infrastructure including Irrigation System, building and mechanicals, equipment
- Supply chain issues and escalating costs of goods
- Staying relevant in a competitive market where our rate structure is limited with two public golf courses in the same city
- Dependency on weather in prime golf months of summer
- Finding and retaining quality labor
- Retaining golfers that visited EGB during Pandemic

CURRENT STAFF

CURRENT STAFF

Superintendent of Greens

Responsible for all facets of golf course maintenance including planning, budgeting, and implementing maintenance programs

Assistant Superintendent of Greens

Responsible for in the field supervision, monitoring of turf conditions and equipment, supervision of full time and seasonal staff

Administrative Assistant/Data Analyst

Tracks and maintains monthly/yearly rounds of play and cart rentals
Processes Requisitions and payments for vendors, on boards
Seasonal employees and assists with payroll

3 Full Time Laborers

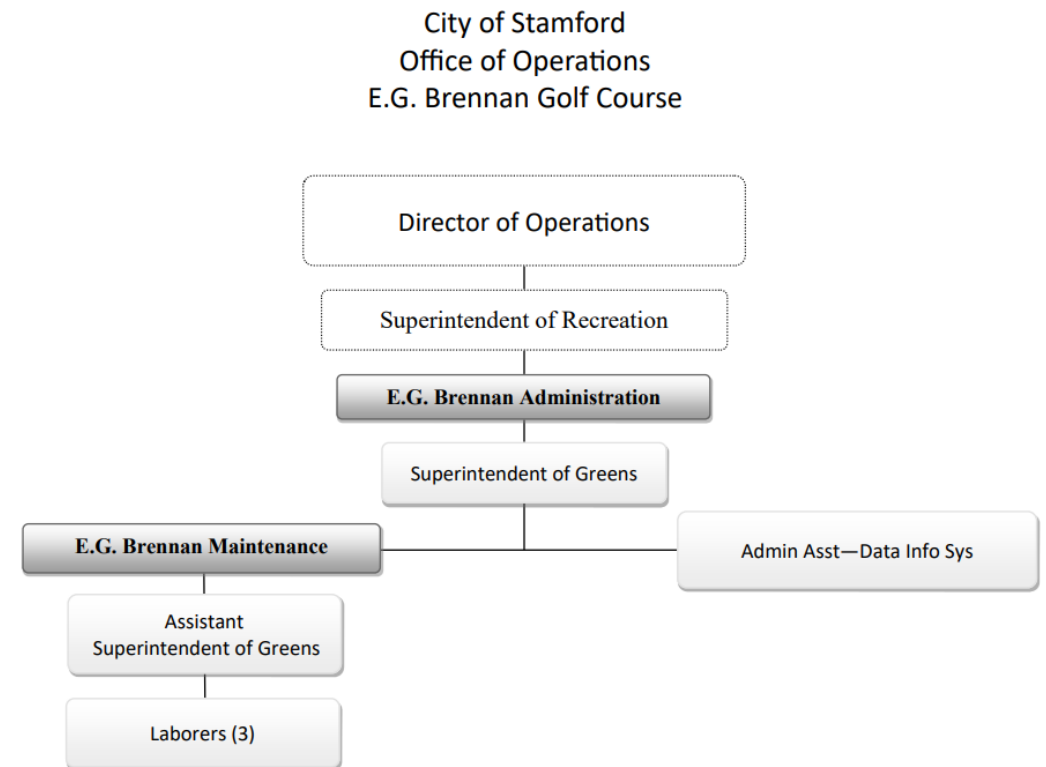
Performs tasks as directed for all outdoor work

4 Seasonal Laborers

Performs tasks as directed for all outdoor work

6 Seasonal Rangers

On course enforcement for play rules



FISCAL YEAR 2022-23

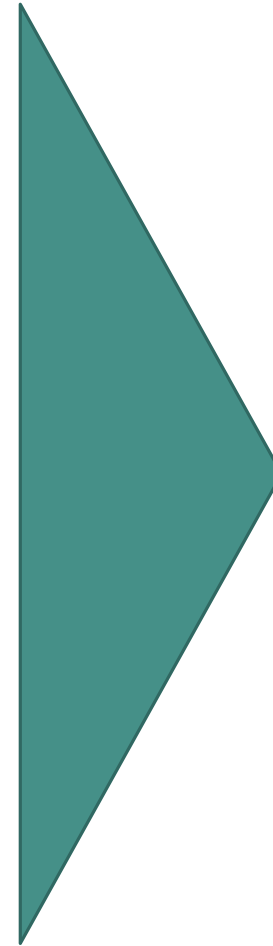
CHANGES FOR THE NEXT FISCAL YEAR

- Proposed FY 22-23 Budget \$1,897,124 = +\$176,839
- True Cost to City \$0, EG Brennan Golf Course is self funded
- Capital Expenses – \$1.6M* Irrigation Project
 - *actual boned amount to be determined

CAPITAL BUDGET REQUEST ITEMS

CAPITAL BUDGET ITEMS

\$1.6M Irrigation Project; actual amount tbd



Capital
Budget

METRICS

METRICS

FY Comparison FY 2021-22 to FY 2020-21				
	Totals through end of Feb.			
	FY 2021-22	FY 2020-21	Full FY 2020-21	
Rounds Played	22,443	26,247	43,347	
Player Revenue	\$686,520	\$753,677	\$1,264,676	
Carts Rented	17,670	19,305	31,616	
Carts Revenue	\$274,462	\$285,768	\$478,184	
Resident Permits Sold	205	248	1,284	
Permit Revenue	\$13,490	\$13,740	\$83,110	
PAR Pass Sold	29	22	95	
PAR Pass Revenue	\$5,475	\$4,075	\$18,300	
Sr Pass Sold	35	30	160	
Sr Pass Revenue	\$2,800	\$2,340	\$12,740	

STAMFORD, CT

