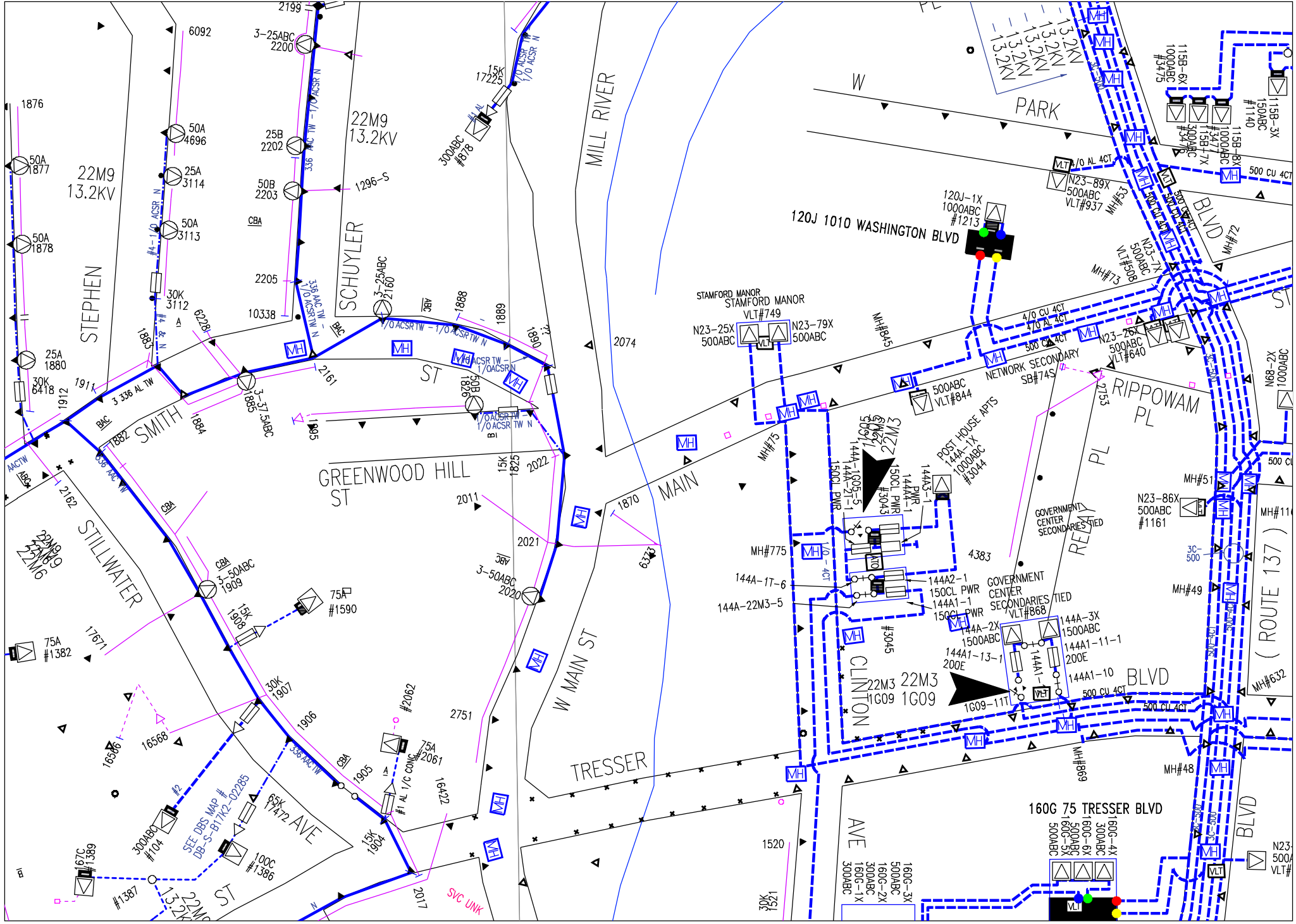


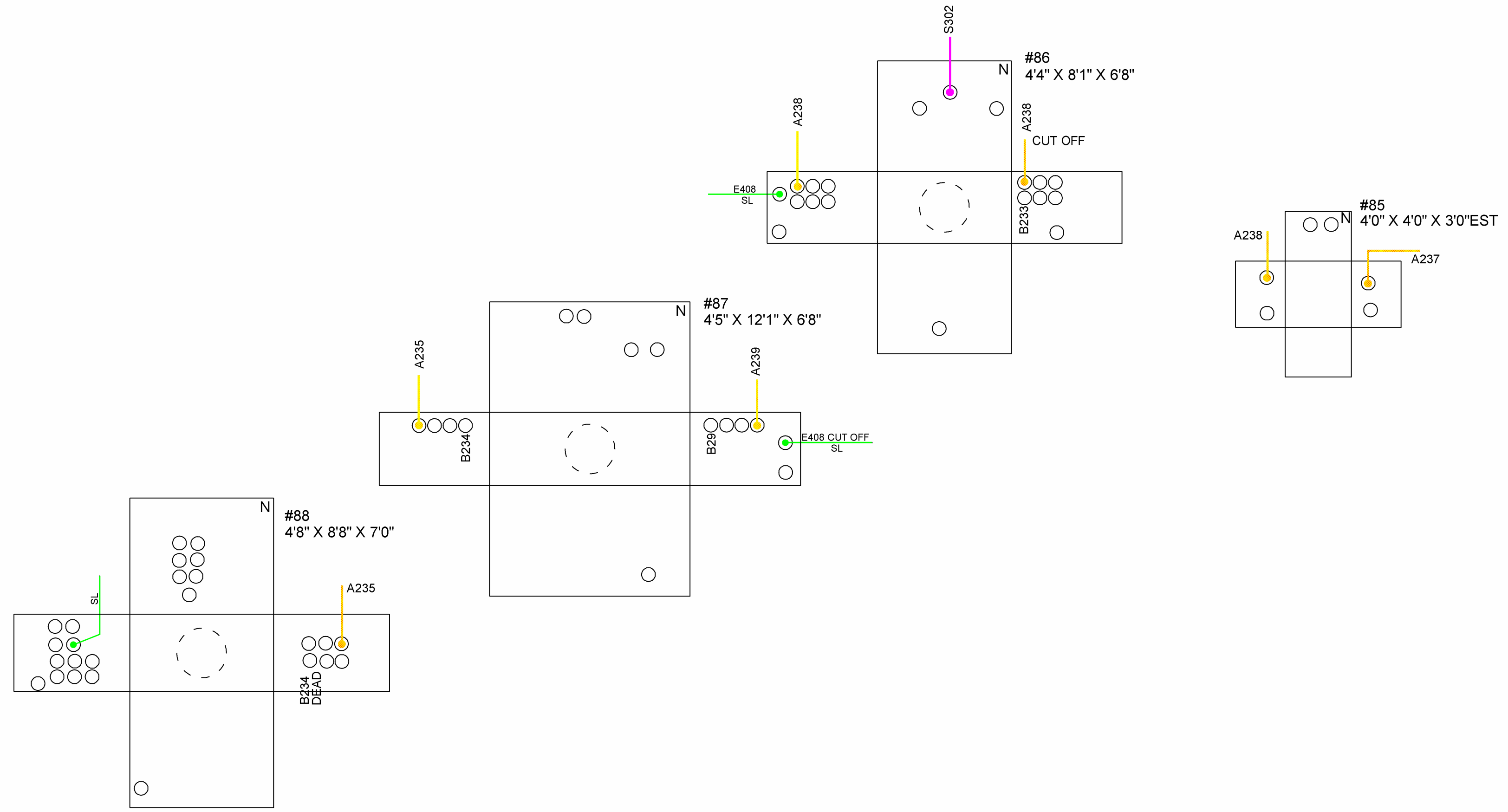
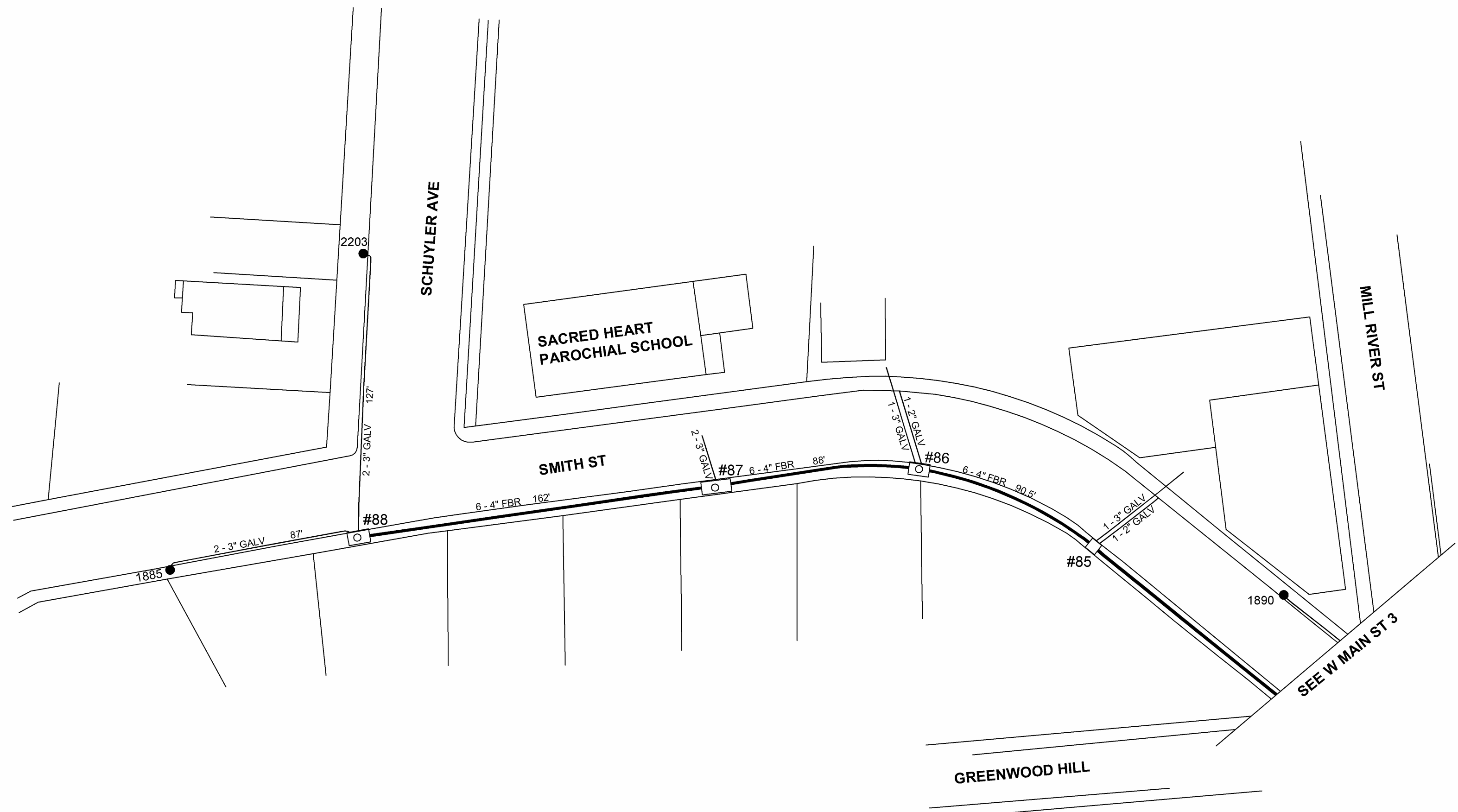
ELECTRIC CABLE PRIMARY SINGLE PHASE PRIMARY TWO PHASE PRIMARY THREE PHASE SCHEM PRIM SINGLE PHASE SCHEM PRIM TWO PHASE SCHEM PRIM THREE PHASE SECONDARY, SERVICE SCHEM SEC., SERVICE SECONDARY NETWORK FIBER OPTIC		OH 	UG 	RECLOSER, RADIAL, TIE, SECTIONALIZING, MIDPOINT, SECTIONALIZER, VOLTAGE SCT SCADA, COMMISSIONED DISCONNECT, OPEN, CLOSED SWITCH, GANG OPERATED, OPEN, CLOSED CUTOUT OR FUSE BOX, OPEN, CLOSED SWITCHGEAR W/CABINET MULTI-POSITIONAL SWITCH AUTO THROW OVER CIRCUIT BREAKER, OPEN, CLOSED BUS BAR, TERMINAL CONNECTOR CRAB OR LIMITER LIMITER, GEOGRAPHIC, STRAIGHT LINE FARGO FAULT INTERRUPTER OPEN, CLOSED GROUND ARRESTER SERVICE POINT, ELECTRIC, FICTITIOUS STAND PIPE, NOT IN SERVICE, IN SERVICE DIRECTION OF FEED ARROWS FUTURE BUILT AND CUSTOMER OWNED LIMIT OF JURISDICTION SUBSTATION CAPACITOR FAULT INDICATOR VOLTAGE REGULATOR CO-GENERATOR PRIMARY METER AREA LIGHT AREA LIGHT, PRIVATE FLOOD LIGHT FLOOD LIGHT, PRIVATE SERIES SERIES, PRIVATE RISER, PRIM, SEC OR SERV PRIMARY TIE POINT SECONDARY TIE POINT DISTRIBUTION TIE POINT DISTRIBUTION LOCATION ELECTRIC NOTE	 					
TOWN LINE LOT LINE, ROW EDGE OF PAVEMENT HYDROLOGY RAILROAD FENCE STREET CENTER LINE CONTOUR EASEMENT BUILDING FOOTPRINT LOT # (50) ADDRESS # #127	 	GAS WATER FIBER OPTICS STORM DRAINAGE SEWER WASTE TELEPHONE CABLE TV NATURAL REGION MATCH LINE	 	SWITCHGEAR IN PRIMARY HANDHOLE SWITCHING CUBICLE ON PRIMARY HANDHOLE SWITCHING CUBICLE ON PAD SUBMERSIBLE TRANSFORMER PAD MOUNTED TRANSFORMER ELECTRICAL ENCLOSURE MANHOLE, VAULT, PULL BOX, SERVICE BOX HEX COVERS DUCT BANKS DUCT BANK, LINE TYPE CONDUIT, LINE TYPE DUCTS, VACANT or PLUGGED PRIMARY SEC, CONTROL, ST LIGHT, NETWORK, NEUTRAL FIBER OPTICS	 SCHEMATIC	TRANSFORMER, OH, UG STEP TRANSFORMER DB/UG TRANSFORMER, RADIAL, LOOP, FEED THRU BUSHING ELBOW, ENERGIZED, PARKED	 SCHEMATIC	WIRE CHANGE, PRIM, SEC OPEN POINT GIS, PRIM, SEC DEADEND, PRIMARY, SEC JUMPER, PRIMARY, SEC SPLICE CABLE TAP, TWO WAY, THREE WAY TEE CONNECTOR		ELECTRIC SYMBOL LIBRARY SCALE 1" = 100'



W Main Street Bridge Rippowam River, Stamford

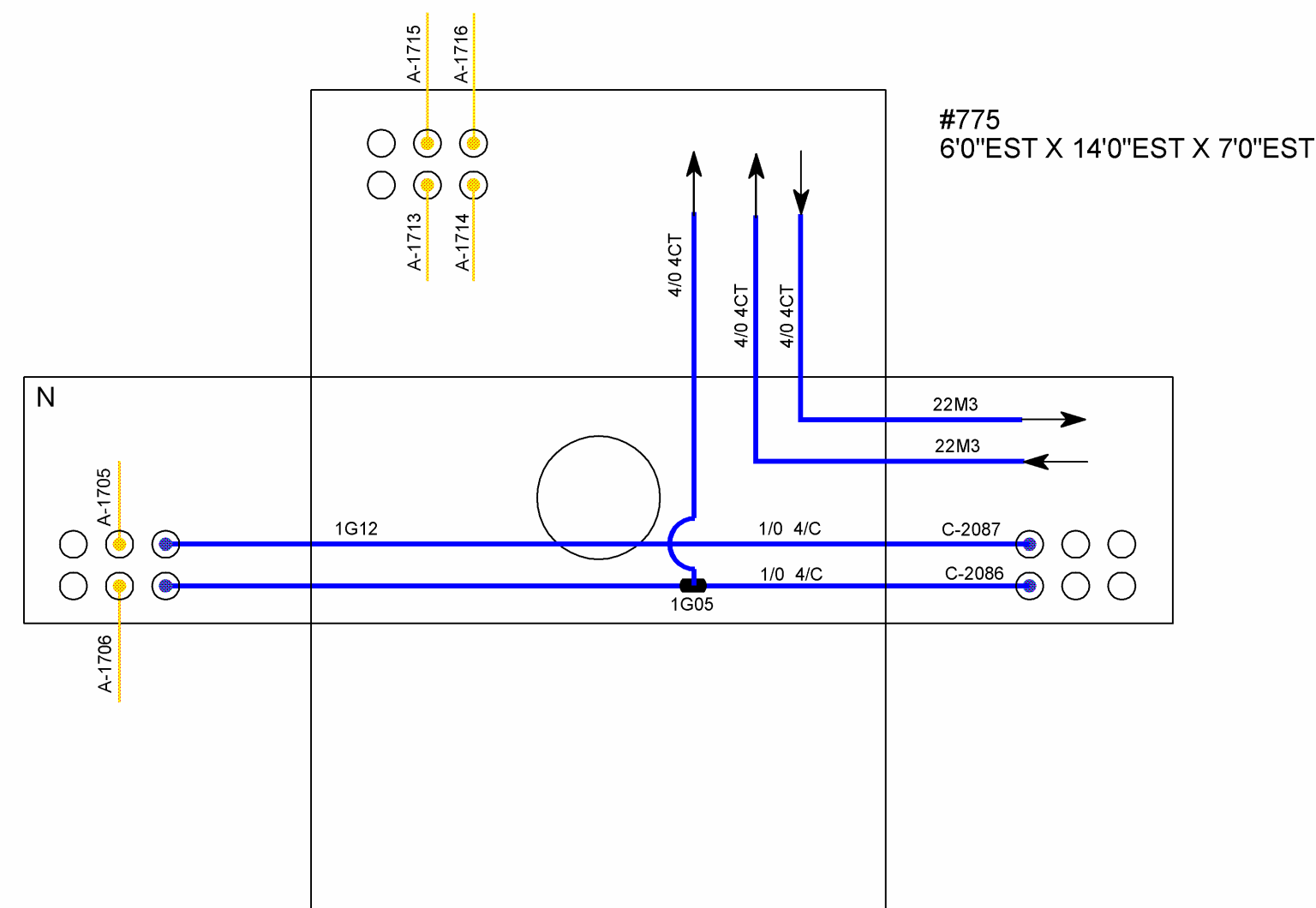
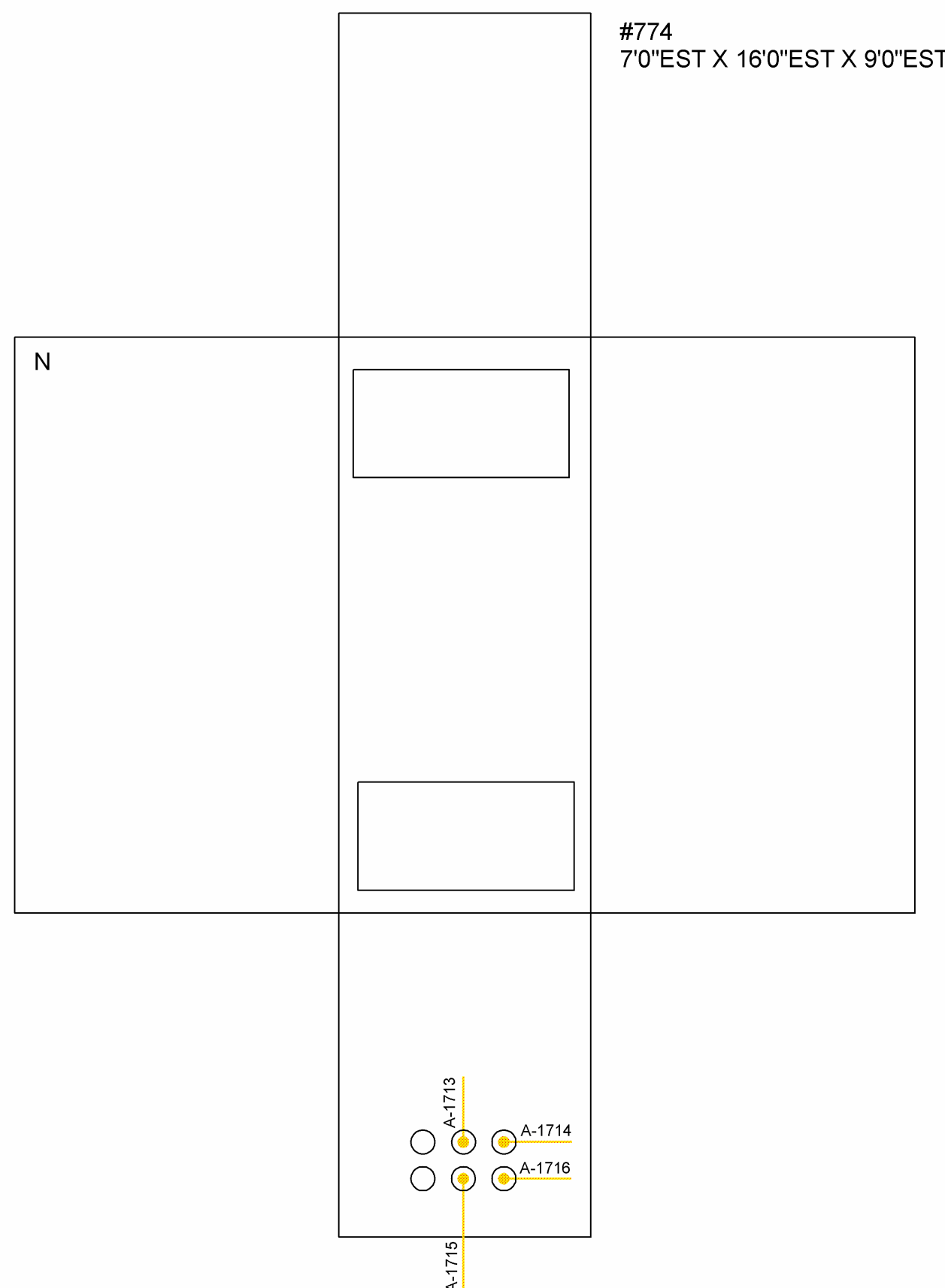
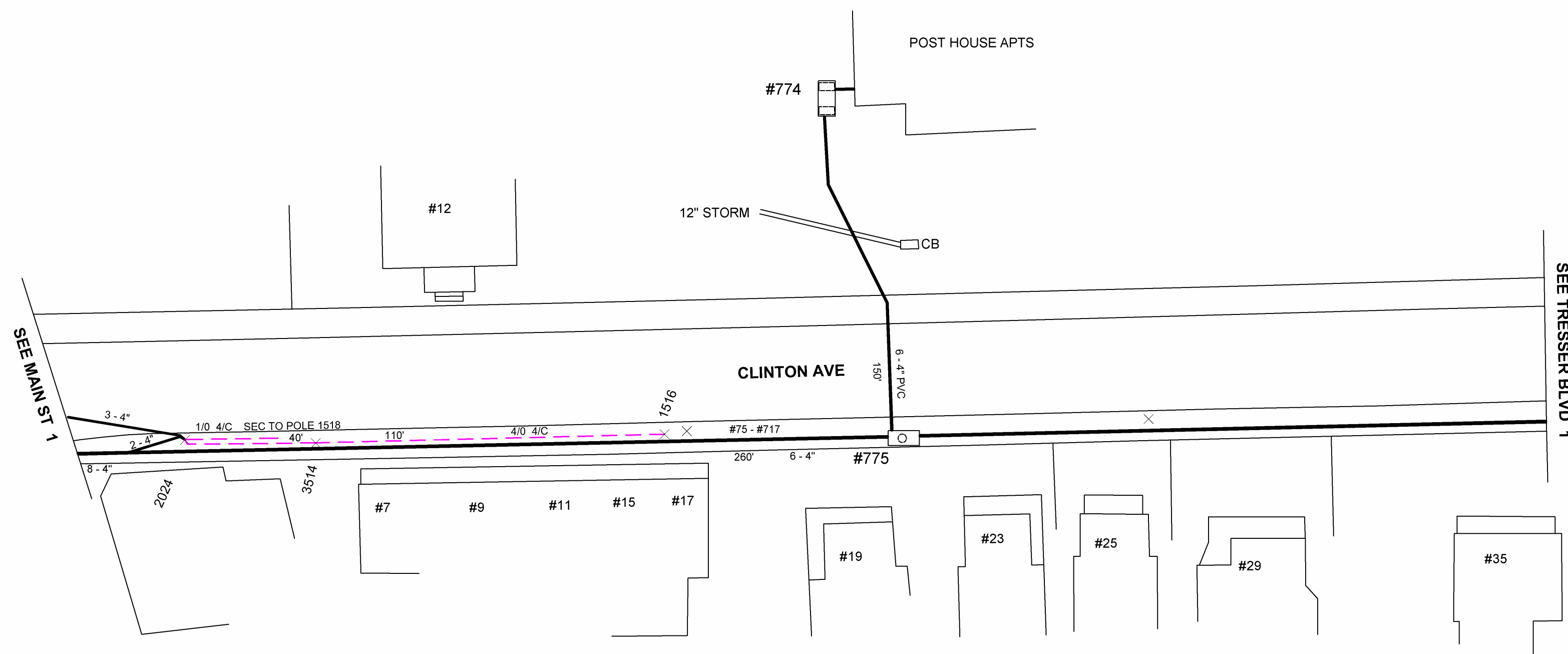
1:2400 1"=200' 400'





ALL SCHEMATIC UG STRUCTURES ARE SCALED 3/16" = 10"
UNLESS OTHERWISE SPECIFIED.

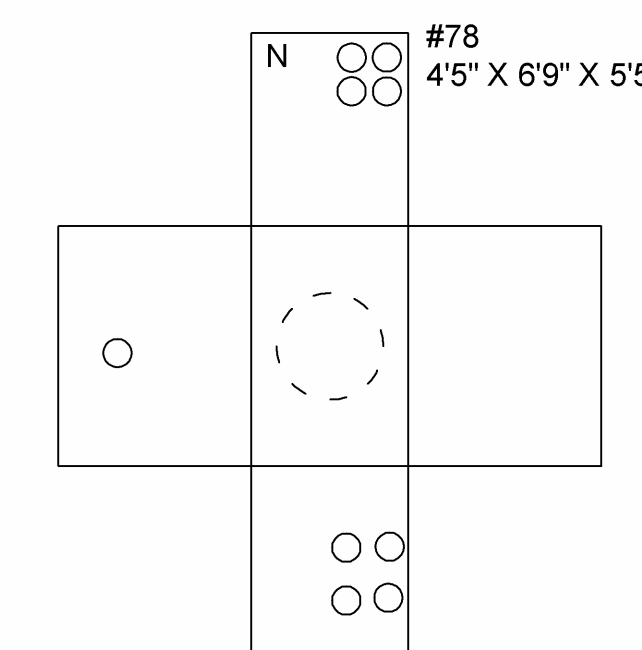
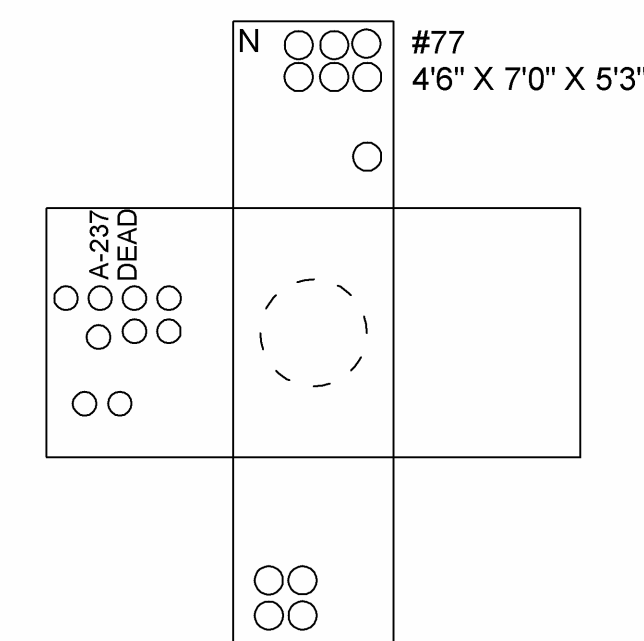
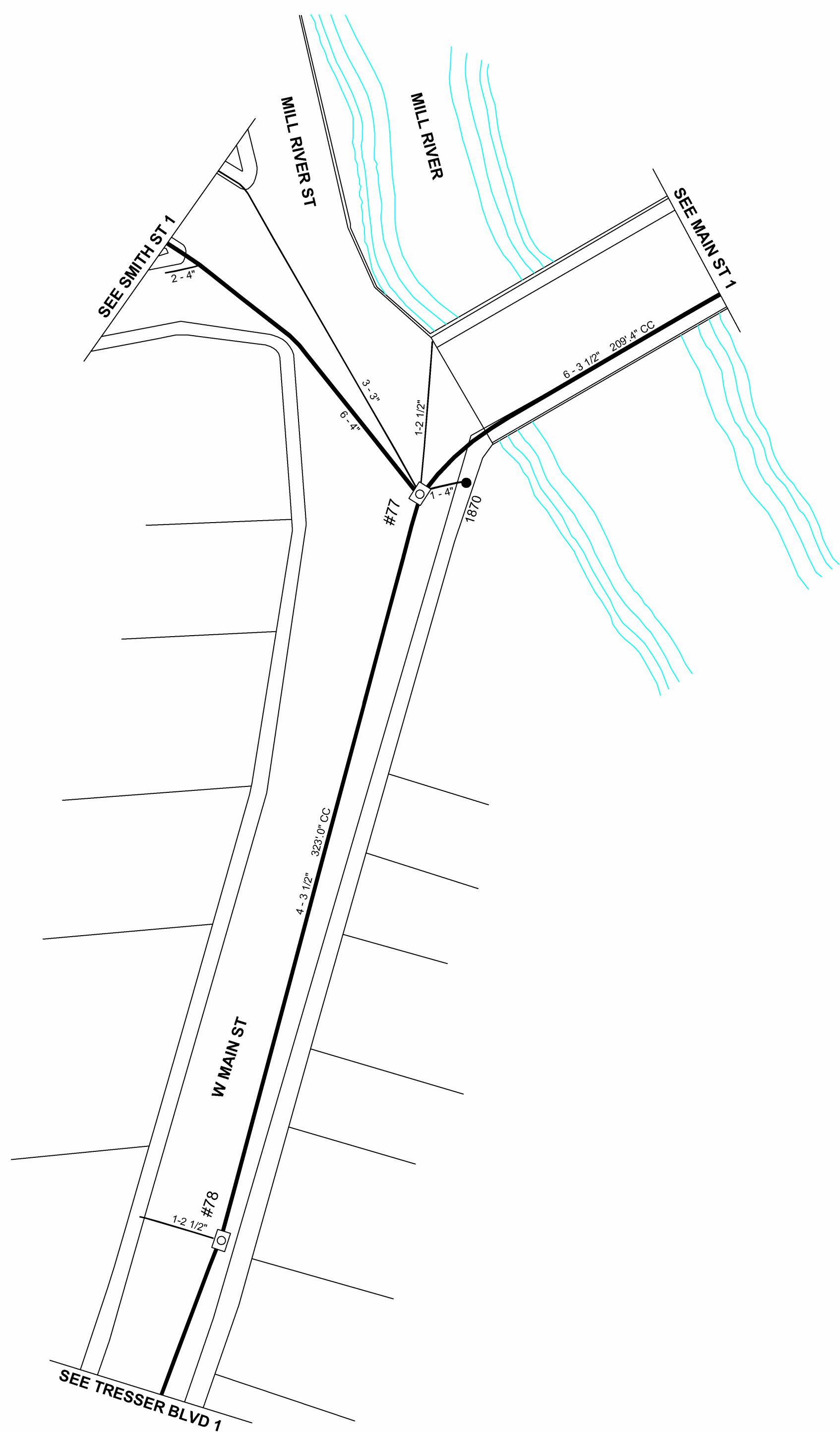
PROPRIETARY INFORMATION: THE INFORMATION ON THIS MAP SHALL BE CONSIDERED PROPRIETARY TO NORTHEAST UTILITIES (NU) AND THE USER (WHICH SHALL BE DEFINED AS ANY PERSON OR ENTITY WHO HAS RECEIVED THE MAP THROUGH SALE, PURCHASE, EXCHANGE, GIFT, OR OTHERWISE) SHALL KEEP IT IN CONFIDENCE AND SHALL NOT FURNISH OR DISCLOSE IT TO ANY THIRD PARTY WITHOUT PRIOR WRITTEN PERMISSION OF NORTHEAST UTILITIES.	GAS WATER FIBER OPTICS SEWER DRAINAGE SEWER WASTE TELEPHONE STREET CENTER LINE EASEMENT MATCH LINE BUILDING FOOTPRINT LOT #, ADDRESS #	HANDHOLE PAD PAD MOUNTED SWITCHING CUBICLE ON HANDHOLE SWITCHING CUBICLE ON THREE PHASE PAD HEX PAD MOUNTED SWITCHING CUBICLE ON HEX SWITCHGEAR IN HANDHOLE SWITCHING CUBICLE ON MANHOLE	SWITCHGEAR IN PRIMARY HANDHOLE SWITCHING CUBICLE ON PRIMARY HANDHOLE SWITCHING CUBICLE ON PAD SUBMERSIBLE TRANSFORMER PAD MOUNTED TRANSFORMER ELECTRICAL ENCLOSURE	MANHOLE, PULL BOX OR SERVICE BOX VAULT POLE, ELEC. 100%, JOINT POL. TEL. 100%, JOINT UG POLE POLE PRIVATE POLE, PUSH BRACE TOWER TEMP DEAD END, PRIMARY OR STAND PIPE, SECONDARY LAWN BOX, SECONDARY ENCLOSURE, SECONDARY SLAB	MANHOLE, VAULT, PULL BOX, SERVICE BOX HEX COVERS DUCT BANKS DUCT BANK, LINE TYPE CONDUIT, LINE TYPE DUCT VACANT, PRIMARY SEC. CONTROL, ST LIGHT, NETWORK, CAPPED, NEUTRAL, FIBER OPTICS	PRIMARY SINGLE PHASE PRIMARY TWO PHASE PRIMARY THREE PHASE SCHEM PRIM SINGLE PHASE SCHEM PRIM TWO PHASE SCHEM PRIM THREE PHASE SECONDARY, SERVICE SCHEM SEC. SERVICE SECONDARY NETWORK FIBER OPTIC	OH UG RECLOSER, RADIAL, TIE, SECTIONALIZING, MIDPOINT, SECTIONALIZER, VOLTAGE SCT SCADA, COMMISSIONED DISCONNECT, OPEN, CLOSED SWITCH, GANG OPERATED, OPEN, CLOSED CUTOFF OR FUSE BOX, OPEN, CLOSED SWITCHGEAR W/CABINET MULTI-POSITIONAL SWITCH AUTO THROW OVER CIRCUIT BREAKER, OPEN, CLOSED	CAPACITOR FAULT INDICATOR VOLTAGE REGULATOR CO-GENERATOR PRIMARY METER AREA LIGHT AREA LIGHT, PRIVATE FLOOD LIGHT FLOOD LIGHT, PRIVATE SERIES, PRIVATE SERIES, PRIVATE RISER, PRIM. SEC OR SERV	TRANSFORMER, OH, UG OIL/OIL TRANSFORMER RADIAL LOOP, FEED THRU STEP TRANSFORMER WIRE CHANGE, PRIM, SEC OPEN POINT GIS, PRIM, SEC DEADEND, PRIMARY, SEC JUMPER, PRIMARY, SEC SPLICE BUSHING ELBOW, ENERGIZED, PARKED CABLE TAP, TWO WAY, THREE WAY TEE CONNECTOR	BUS BAR TERMINAL CONNECTOR CRAB OR LIMITER STRAIGHT LINE FARGO FAULT INTERRUPTER OPEN, CLOSED GROUND ARRESTER SERVICE POINT, ELECTRIC, FICTITIOUS STAND PIPE, NOT IN SERVICE, IN SERVICE	PRIMARY TIE POINT SECONDARY TIE POINT DISTRIBUTION LOCATION ELECTRIC NOTE DIRECTION OF FEED ARROWS FUTURE BUILT AND CUSTOMER OWNED LIMIT OF JURISDICTION SUBSTATION	<table border="1"> <thead> <tr> <th colspan="3">REVISIONS</th> </tr> <tr> <th>DATE</th> <th>BY</th> <th>DESCRIPTION</th> </tr> </thead> <tbody> <tr> <td>10/09/73</td> <td></td> <td>LAST REVISION</td> </tr> <tr> <td>03/06/06</td> <td>JCMB</td> <td>DIGITIZED</td> </tr> <tr> <td>12/10/12</td> <td>J</td> <td>MH UPDATES</td> </tr> </tbody> </table>	REVISIONS			DATE	BY	DESCRIPTION	10/09/73		LAST REVISION	03/06/06	JCMB	DIGITIZED	12/10/12	J	MH UPDATES	<p style="text-align: center;">NORTHEAST UTILITIES CONNECTICUT LIGHT & POWER COMPANY</p> <p style="text-align: center;">UNDERGROUND (UG) MAP SMITH ST STAMFORD</p> <p>SMITH ST W MAIN ST GREENWOOD HILL MILL RIVER ST SCHUYLER AVE</p> <table border="1"> <thead> <tr> <th>DRAWN BY</th> <th>DATE</th> <th>CHECKED BY</th> <th>DATE</th> <th>ISSUED BY</th> <th>DATE</th> </tr> </thead> <tbody> <tr> <td>RR</td> <td>8/19/85</td> <td>JC</td> <td>12/10/12</td> <td>JC</td> <td>12/10/12</td> </tr> </tbody> </table> <p>SCALE 1" = 40' OF 1 UG SMITH ST STAMFORD 01</p>	DRAWN BY	DATE	CHECKED BY	DATE	ISSUED BY	DATE	RR	8/19/85	JC	12/10/12	JC	12/10/12
	REVISIONS																																							
DATE	BY	DESCRIPTION																																						
10/09/73		LAST REVISION																																						
03/06/06	JCMB	DIGITIZED																																						
12/10/12	J	MH UPDATES																																						
DRAWN BY	DATE	CHECKED BY	DATE	ISSUED BY	DATE																																			
RR	8/19/85	JC	12/10/12	JC	12/10/12																																			



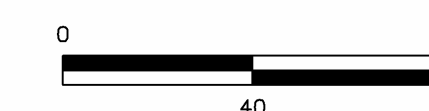
REFERENCES
 DRWG SKWH010373
 FB 68 PAGES 147 LOC MH #775 TO V-774
 ELDERLY HOUSING
 FB 50 PAGES 112 - 113 MH #75
 TO POLE 2024

ALL SCHEMATIC UG STRUCTURES ARE SCALED 3/16" = 10"
 UNLESS OTHERWISE SPECIFIED.

PROPRIETARY INFORMATION: THE INFORMATION ON THIS MAP SHALL BE CONSIDERED PROPRIETARY TO NORTHEAST UTILITIES (NU) AND THE USER (WHICH SHALL BE DEFINED AS ANY PERSON OR ENTITY WHO HAS RECEIVED THE MAP THROUGH SALE, PURCHASE, EXCHANGE, GIFT, OR OTHERWISE) SHALL KEEP IT IN CONFIDENCE AND SHALL NOT FURNISH OR DISCLOSE IT TO ANY THIRD PARTY WITHOUT PRIOR WRITTEN PERMISSION OF NORTHEAST UTILITIES.	GAS — G — G WATER — W — W FIBER OPTICS — F — F SEWER DRAINAGE — SD — SD SEWER WASTE — SW — SW TELEPHONE — T — T STREET CENTER LINE EASEMENT MATCH LINE BUILDING FOOTPRINT LOT #, ADDRESS #	HANDHOLE PAD PAD MOUNTED SWITCHING CUBICLE ON HANDHOLE SWITCHING CUBICLE ON THREE PHASE PAD HEX PAD MOUNTED SWITCHING CUBICLE ON HEX SWITCHGEAR IN HANDHOLE SWITCHING CUBICLE ON MANHOLE	GEOGRAPHIC SWITCHGEAR IN PRIMARY HANDHOLE SWITCHING CUBICLE ON PRIMARY HANDHOLE SWITCHING CUBICLE ON PAD SUBMERSIBLE TRANSFORMER PAD MOUNTED TRANSFORMER ELECTRICAL ENCLOSURE	SCHEMATIC MANHOLE, PULL BOX OR SERVICE BOX VAULT POLE, ELEC, 100% JOINT POL, TEL, 100% JOINT UG POLE POLE PRIVATE POLE, PUSH BRACE TOWER TEMP DEAD END, PRIMARY OR STAND PIPE, SECONDARY LAWN BOX, SECONDARY ENCLOSURE, SECONDARY SLAB	MANHOLE, VAULT, PULL BOX, SERVICE BOX HEX COVERS DUCT BANKS DUCT BANK, LINE TYPE CONDUIT, LINE TYPE DUCT, VACANT, PRIMARY SEC. CONTROL, ST LIGHT, NETWORK, CARPED, NEUTRAL, FIBER OPTICS	SCHEMATIC PRIMARY SINGLE PHASE PRIMARY TWO PHASE PRIMARY THREE PHASE SCHEM PRIM SINGLE PHASE SCHEM PRIM TWO PHASE SCHEM PRIM THREE PHASE SECONDARY, SERVICE SCHEM SEC., SERVICE SECONDARY NETWORK FIBER OPTIC	OH UG RECLOSER, RADIAL, TIE, SECTIONALIZING, MIDPOINT, SECTIONALIZER, VOLTAGE SCT SCADA, COMMISSIONED DISCONNECT, OPEN, CLOSED SWITCH, GANG OPERATED, OPEN, CLOSED CUTOFF OR FUSE BOX, OPEN, CLOSED SWITCHGEAR W/CABINET MULTI-POSITIONAL SWITCH AUTO THROW OVER CIRCUIT BREAKER, OPEN, CLOSED	OH UG CAPACITOR FAULT INDICATOR VOLTAGE REGULATOR CO-GENERATOR PRIMARY METER AREA LIGHT AREA LIGHT, PRIVATE FLOOD LIGHT, PRIVATE SERIES SERIES, PRIVATE RISER, PRIM, SEC OR SERV	OH UG TRANSFORMER, OH, UG DB/UG TRANSFORMER, RADIAL LOOP, FEED THRU STEP TRANSFORMER WIRE CHANGE, PRIM, SEC OPEN POINT GIS, PRIM, SEC DEADEND, PRIMARY, SEC JUMPER, PRIMARY, SEC SPURCE BUSHING ELBOW, ENERGIZED, PARKED CABLE TAP TWO WAY, THREE WAY TEE CONNECTOR	OH UG BUS BAR, TERMINAL CONNECTOR CRAB OR LIMITER LIMITER, GEOGRAPHIC, STRAIGHT LINE FARGO FAULT INTERRUPTER OPEN, CLOSED GROUND ARRESTER SERVICE POINT, ELECTRIC, FICTITIOUS STAND PIPE, NOT IN SERVICE, IN SERVICE	OH UG PRIMARY TIE POINT SECONDARY TIE POINT DISTRIBUTION TIE POINT DISTRIBUTION LOCATION ELECTRIC NOTE DIRECTION OF FEED ARROWS FUTURE BUILT AND CUSTOMER OWNED LIMIT OF JURISDICTION SUBSTATION	REVISIONS <table border="1"> <thead> <tr> <th>DATE</th> <th>BY</th> <th>DESCRIPTION</th> </tr> </thead> <tbody> <tr> <td>01/18/04</td> <td></td> <td>LAST REVISION</td> </tr> <tr> <td>06/02/06</td> <td>JCHB</td> <td>DIGITIZED</td> </tr> <tr> <td>2/15/13</td> <td>J</td> <td>MH UPDATES</td> </tr> </tbody> </table>	DATE	BY	DESCRIPTION	01/18/04		LAST REVISION	06/02/06	JCHB	DIGITIZED	2/15/13	J	MH UPDATES	NORTHEAST UTILITIES CONNECTICUT LIGHT & POWER COMPANY UNDERGROUND (UG) MAP STAMFORD CLINTON AVE MAIN ST TRESSER BLVD	<table border="1"> <thead> <tr> <th>DRAWN BY</th> <th>DATE</th> <th>CHECKED BY</th> <th>DATE</th> <th>ISSUED BY</th> <th>DATE</th> </tr> </thead> <tbody> <tr> <td>KJ</td> <td>02/21/74</td> <td>JC</td> <td>2/15/13</td> <td>JC</td> <td>2/15/13</td> </tr> </tbody> </table>	DRAWN BY	DATE	CHECKED BY	DATE	ISSUED BY	DATE	KJ	02/21/74	JC	2/15/13	JC	2/15/13
	DATE	BY	DESCRIPTION																																			
	01/18/04		LAST REVISION																																			
06/02/06	JCHB	DIGITIZED																																				
2/15/13	J	MH UPDATES																																				
DRAWN BY	DATE	CHECKED BY	DATE	ISSUED BY	DATE																																	
KJ	02/21/74	JC	2/15/13	JC	2/15/13																																	
SCALE 1" = 40' 1 OF 2 UG CLINTON AVE STAMFORD 01																																						
PROPRIETARY INFORMATION: THE INFORMATION ON THIS MAP SHALL BE CONSIDERED PROPRIETARY TO NORTHEAST UTILITIES (NU) AND THE USER (WHICH SHALL BE DEFINED AS ANY PERSON OR ENTITY WHO HAS RECEIVED THE MAP THROUGH SALE, PURCHASE, EXCHANGE, GIFT, OR OTHERWISE) SHALL KEEP IT IN CONFIDENCE AND SHALL NOT FURNISH OR DISCLOSE IT TO ANY THIRD PARTY WITHOUT PRIOR WRITTEN PERMISSION OF NORTHEAST UTILITIES.																																						



ALL SCHEMATIC UG STRUCTURES ARE SCALED 3/16" = 1'
UNLESS OTHERWISE SPECIFIED.



PROPRIETARY INFORMATION:
THE INFORMATION ON THIS MAP SHALL BE CONSIDERED PROPRIETARY TO NORTHEAST UTILITIES (NU) AND THE USER (WHICH SHALL BE DEFINED AS ANY PERSON OR ENTITY WHO HAS RECEIVED THE MAP THROUGH SALE, PURCHASE, EXCHANGE, GIFT, OR OTHERWISE) SHALL KEEP IT IN CONFIDENCE AND SHALL NOT FURNISH OR DISCLOSE IT TO ANY THIRD PARTY WITHOUT PRIOR WRITTEN PERMISSION OF NORTHEAST UTILITIES.

GAS	—G—G—
WATER	—W—W—
FIBER OPTICS	—F—F—
SEWER DRAINAGE	—SD—SD—
SEWER WASTE	—SW—SW—
TELEPHONE	—T—T—
STREET CENTER LINE	—
EASEMENT	—
MATCH LINE	—
BUILDING FOOTPRINT	—
LOT #, ADDRESS #	③ #127

HANDHOLE	○
PAD	□
PAD MOUNTED SWITCHING CUBICLE ON HANDHOLE	○
SWITCHING CUBICLE ON THREE PHASE PAD	○
HEX	□
PAD MOUNTED SWITCHING CUBICLE ON HEX	○
SWITCHGEAR IN HANDHOLE	○
SWITCHING CUBICLE ON MANHOLE	○

SWITCHGEAR IN PRIMARY HANDHOLE	○
SWITCHING CUBICLE ON PRIMARY HANDHOLE	○
SWITCHING CUBICLE ON PAD	○
SUBMERSIBLE TRANSFORMER	○
PAD MOUNTED TRANSFORMER	○
ELECTRICAL ENCLOSURE	□

MANHOLE, PULL BOX OR SERVICE BOX	○
VAULT	○
POLE, ELEC, 100%, JOINT	○
POL, TEL, 100%, JOINT	○
UG POLE	○
POLE PRIVATE	○
POLE, PUSH BRACE	○
TOWER	○
TEMP DEAD END, PRIMARY OR STAND PIPE, SECONDARY	○
LAWN BOX, SECONDARY ENCLOSURE, SECONDARY SLAB	○

MANHOLE, VAULT, PULL BOX, SERVICE BOX	○
HEX	□
COVERS	○
DUCT BANKS	○
DUCT BANK, LINE TYPE	○
CONDUIT, LINE TYPE	○
DUCT, VACANT, PRIMARY	○
SEC, CONTROL, ST LIGHT, NETWORK, CAPPED, NEUTRAL, FIBER OPTICS	○

PRIMARY SINGLE PHASE	—
PRIMARY TWO PHASE	—
SCHEM PRIM SINGLE PHASE	—
SCHEM PRIM TWO PHASE	—
SCHEM PRIM THREE PHASE	—
SECONDARY, SERVICE	—
SCHEM SEC, SERVICE	—
SECONDARY NETWORK	—
FIBER OPTIC	—

TOWN LINE	—
LOT LINE, ROW	—
EDGE OF PAVEMENT	—
HYDROLOGY	—
RAILROAD	—
FENCE	—

RECLOSER, RADIAL, TIE, SECTIONALIZING, MIDPOINT, SECTIONALIZER, VOLTAGE SCT	—
SCADA, COMMISSIONED	—
DISCONNECT, OPEN, CLOSED	—
SWITCH, GANG OPERATED, OPEN, CLOSED	—
CUTOUT OR FUSE BOX, OPEN, CLOSED	—
SWITCHGEAR W/CABINET	—
MULTI-POSITIONAL SWITCH	—
AUTO THROW OVER	—
CIRCUIT BREAKER, OPEN, CLOSED	—

CAPACITOR	○
FAULT INDICATOR	○
VOLTAGE REGULATOR	○
CO-GENERATOR	○
PRIMARY METER	○
AREA LIGHT, PRIVATE	○
FLOOD LIGHT, PRIVATE	○
SERIES, PRIVATE	○
RISER, PRIM, SEC OR SERV	○

TRANSFORMER, OH, UG	○
DEBUG TRANSFORMER	○
RADIAL, LOOP, FEED THRU	○
STEP TRANSFORMER	○
WIRE CHANGE, PRIM, SEC	○
OPEN POINT GIS, PRIM, SEC	○
DEADEND, PRIMARY, SEC	○
JUMPER, PRIMARY, SEC	○
SPLICE	○
BUSHING	○
ELBOW, ENERGIZED, PARKED	○
CABLE TAP, TWO WAY, THREE WAY	○
TIE CONNECTOR	○

BUS BAR, TERMINAL CONNECTOR	○
CRAB OR LIMITER	○
LIMITER, GEOGRAPHIC, STRAIGHT LINE	○
FARGO	○
FAULT INTERRUPTER	○
OPEN, CLOSED	○
GROUND	○
ARRESTER	○
SERVICE POINT, ELECTRIC, FICTITIOUS	○
STAND PIPE, NOT IN SERVICE, IN SERVICE	○

PRIMARY TIE POINT	○
SECONDARY TIE POINT	○
DISTRIBUTION TIE POINT	○
DISTRIBUTION LOCATION	○
ELECTRIC NOTE	○
DIRECTION OF FEED ARROWS	○
FUTURE BUILT AND CUSTOMER OWNED	○
LIMIT OF JURISDICTION	○
SUBSTATION	○

REVISIONS		
DATE	BY	DESCRIPTION
02/03/75		LAST REVISION
03/01/06	XCMB	DIGITIZED
12/10/12	J	MH UPDATES

NORTHEAST UTILITIES
CONNECTICUT LIGHT & POWER COMPANY

UNDERGROUND (UG) MAP
W MAIN ST
STAMFORD

W MAIN ST MAIN ST SMITH ST TRESSER BLVD MILL RIVER ST

DRAWN BY	DATE	CHECKED BY	DATE	ISSUED BY	DATE
RR	8/19/85	JC	12/10/12	JC	12/10/12

SCALE 1" = 40' 3 OF 3 UG W MAIN ST STAMFORD 03



SYMBOLS

- #1234 NETWORK TRANSFORMER WITH NUMBER
 - #1234 MANHOLE WITH NUMBER
 - #1234 VAULT WITH NUMBER
 - #123 LARGE SERVICE BOX WITH NUMBER
 - #123 SMALL SERVICE BOX WITH NUMBER
 - STREET LIGHT
 - RISER
 - POLE
 - SERVICE POINT
 - NETWORK SECONDARY
 - NOTED NETWORK SECONDARY
 - SERVICE CABLE
 - STREET LIGHT SERVICE
 - OVERHEAD SECONDARY
- EXAMPLE:

 #123-#456 CABLE SIZE, ADDRESS TEXT, SERVICE BOX AND NUMBER, AND TWO SETS OF SECONDARY
 4/0 7CT

NOTES:

- 1 SET OF 7CT 4/0
- 2 SETS OF 7CT 4/0
- 3 SETS OF 7CT 4/0
- 4 SETS OF 7CT 4/0
- 4 SETS OF 4CT 500
- ALL OTHER SETS OF 4CT 500 WILL BE LABELED
- 1 SET 4CT 4/0

REVISIONS

DATE	BY	DESCRIPTION
9/1/09	J	FIRST ISSUE

PROPRIETARY INFORMATION:
 THE INFORMATION ON THIS MAP SHALL BE CONSIDERED PROPRIETARY TO NORTHEAST UTILITIES (NU) AND THE USER (WHICH SHALL BE DEFINED AS ANY PERSON OR ENTITY WHO HAS RECEIVED THE MAP THROUGH SALE, PURCHASE, EXCHANGE, GIFT OR OTHERWISE) SHALL KEEP IT IN CONFIDENCE AND SHALL NOT FURNISH OR DISCLOSE IT TO ANY THIRD PARTY WITHOUT PRIOR WRITTEN PERMISSION OF NORTHEAST UTILITIES.

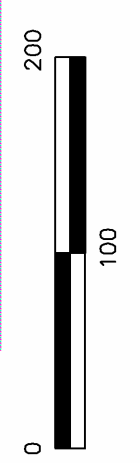
NORTHEAST UTILITIES
 CONNECTICUT LIGHT & POWER COMPANY

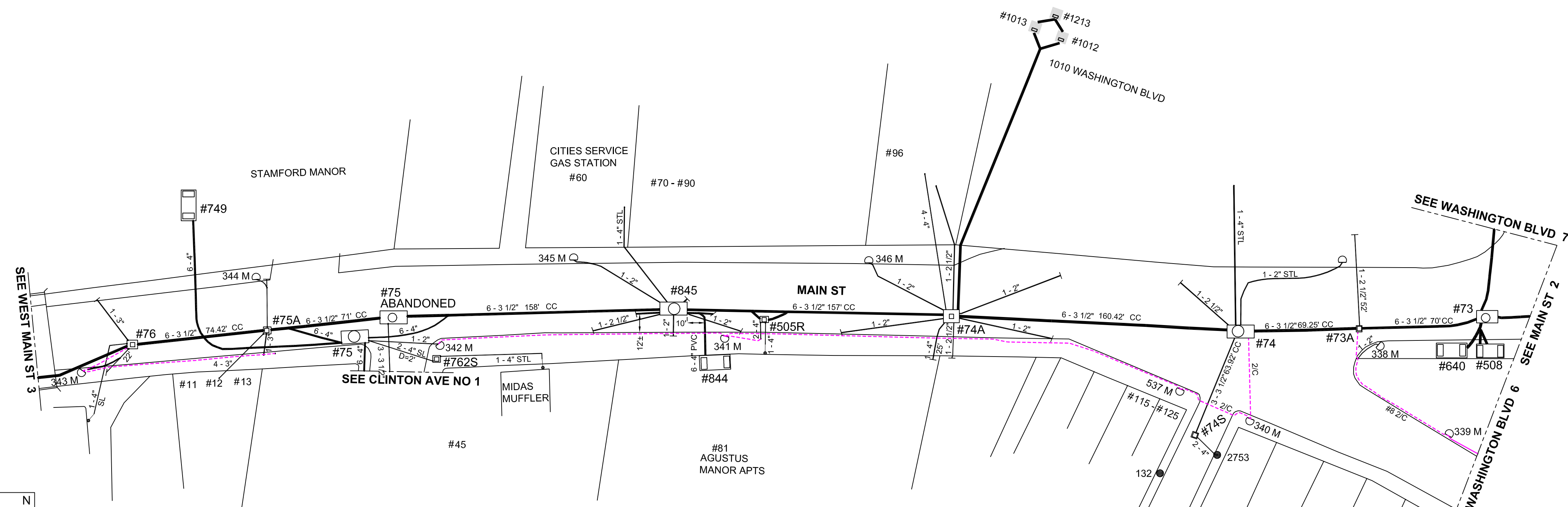
SECONDARY NETWORK MAP
 STAMFORD NETWORK
 STAMFORD
 W MAIN ST, TRESSER BLVD, GREENWICH AVE

DRAWN BY	DATE	CHECKED BY	DATE	ISSUED BY	DATE
JC	4/8/09	JC	9/1/09	JC	9/1/09

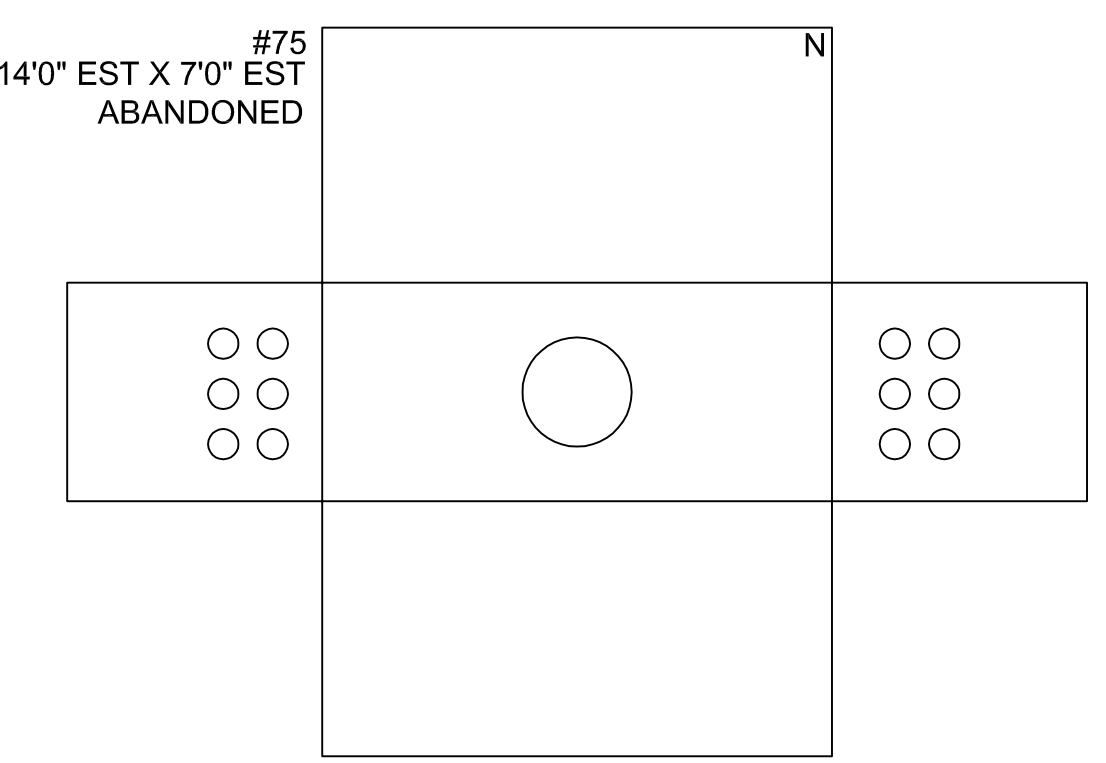
SCALE 1" = 100'

NS-B17-2 K-2

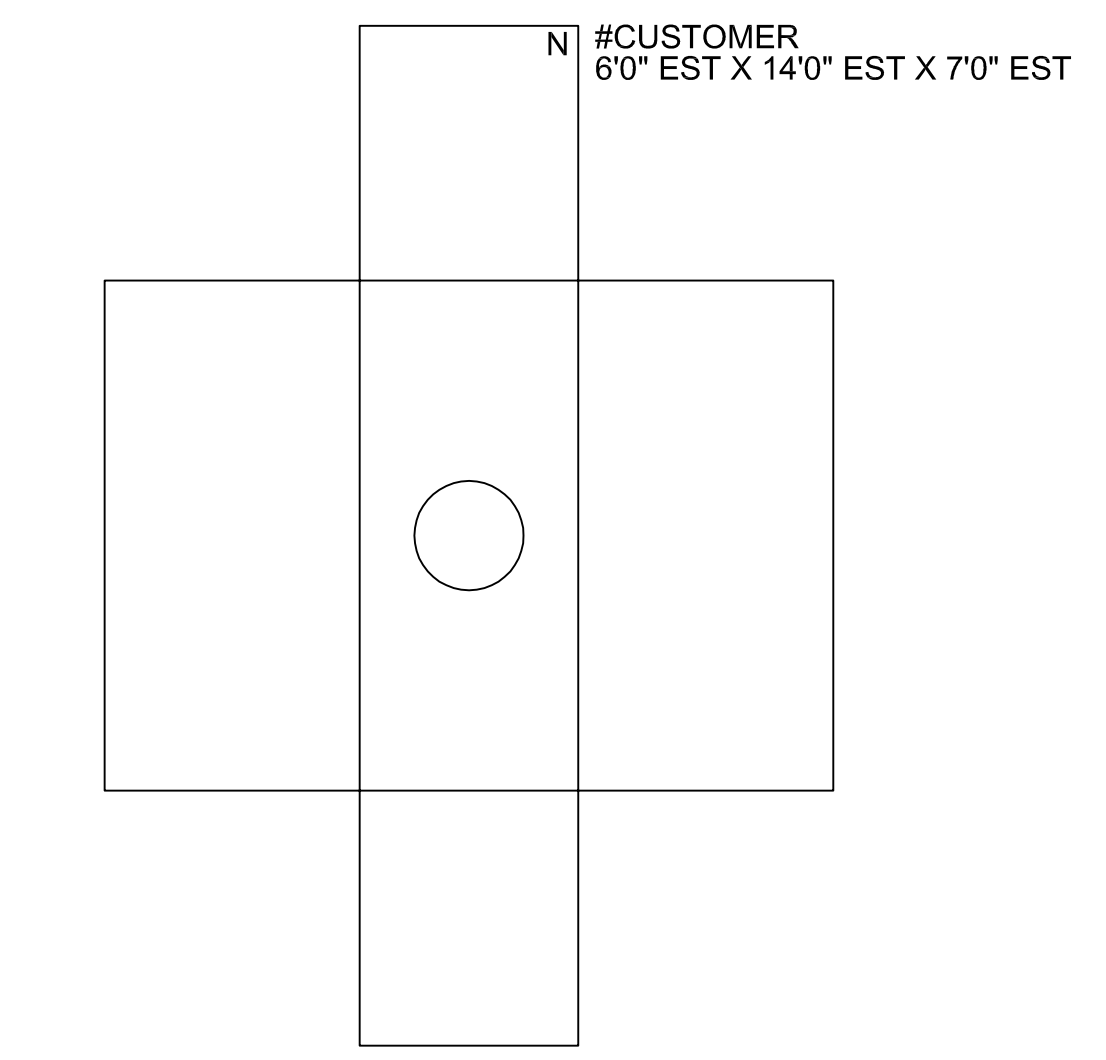




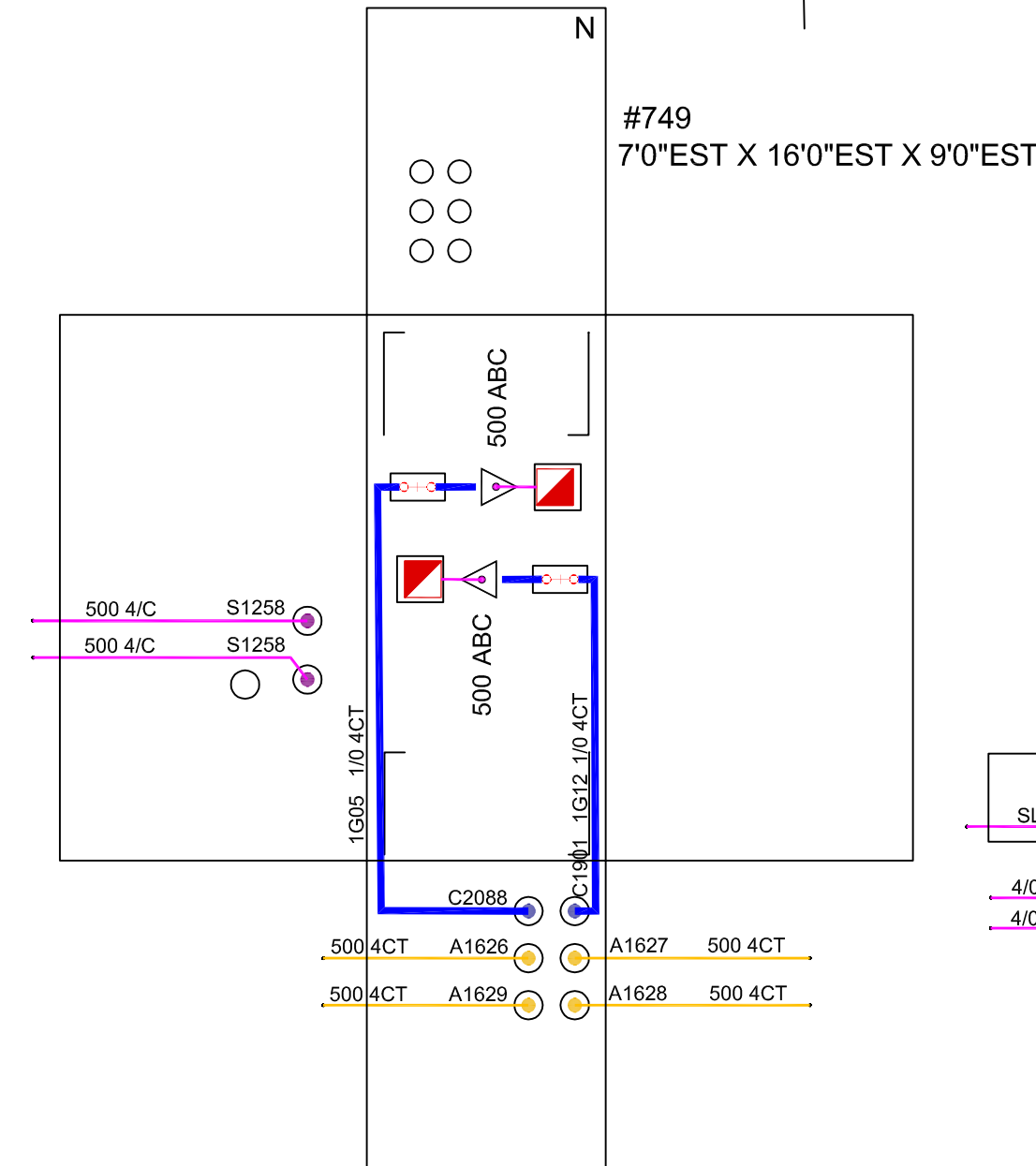
#75
60" EST X 14'0" EST X 7'0" EST
ABANDONED



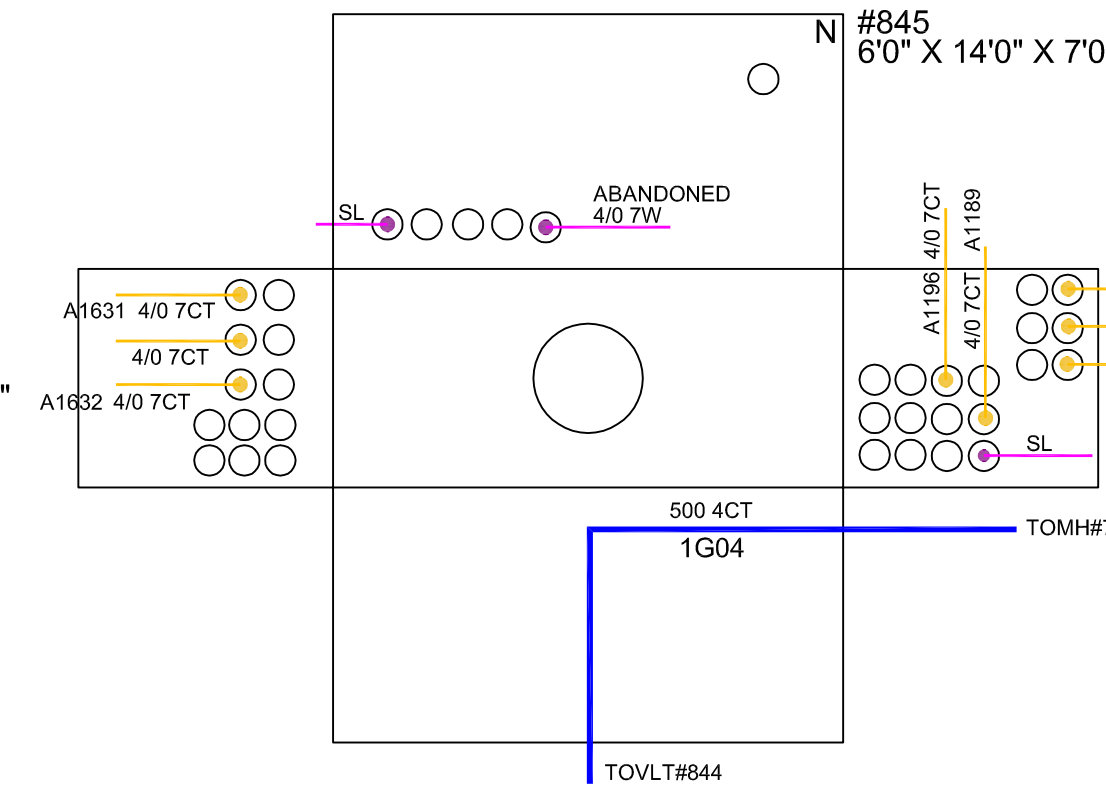
#CUSTOMER
60" EST X 14'0" EST X 7'0" EST



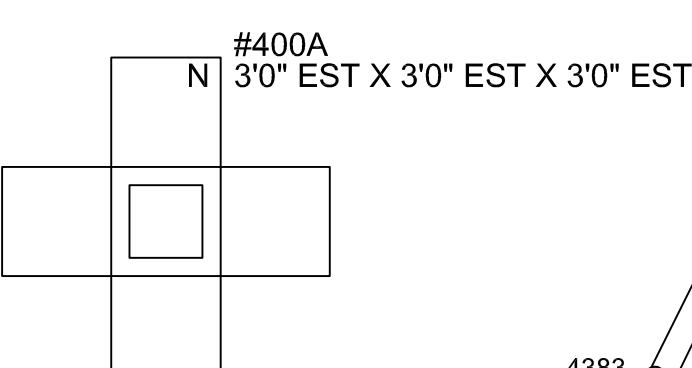
#749
70" EST X 16'0" EST X 9'0" EST



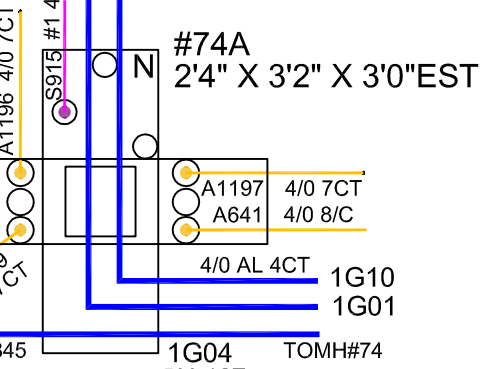
#845
6'0" X 14'0" X 7'0"



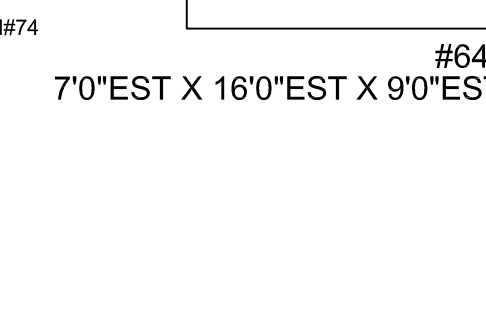
#400A
3'0" EST X 3'0" EST X 3'0" EST



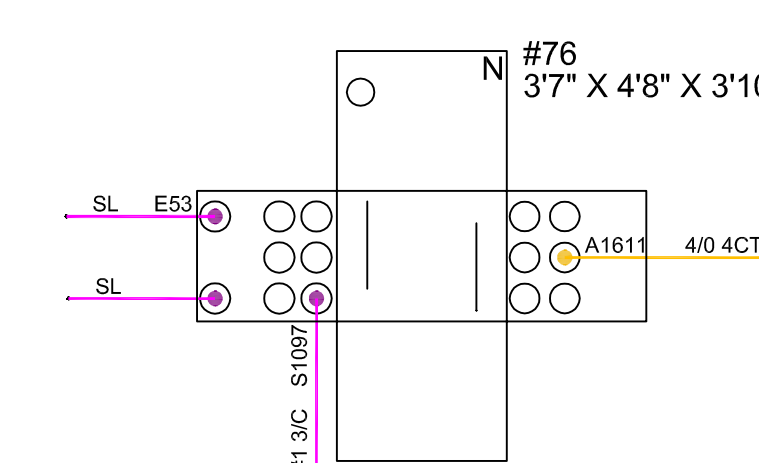
#74A
2'4" X 3'2" X 3'0" EST



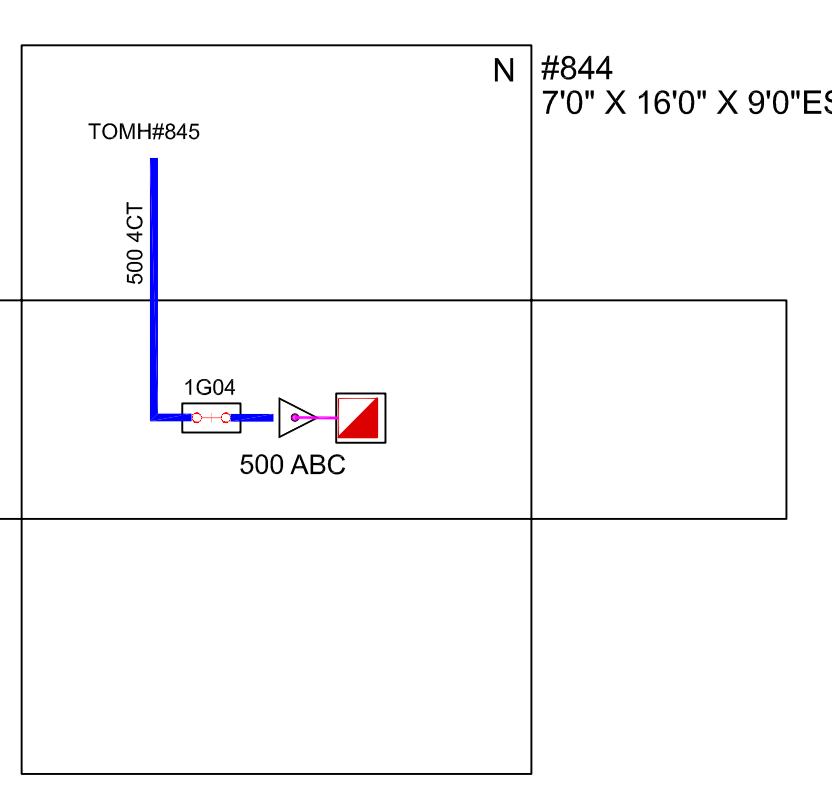
#640
7'0" EST X 16'0" EST X 9'0" EST



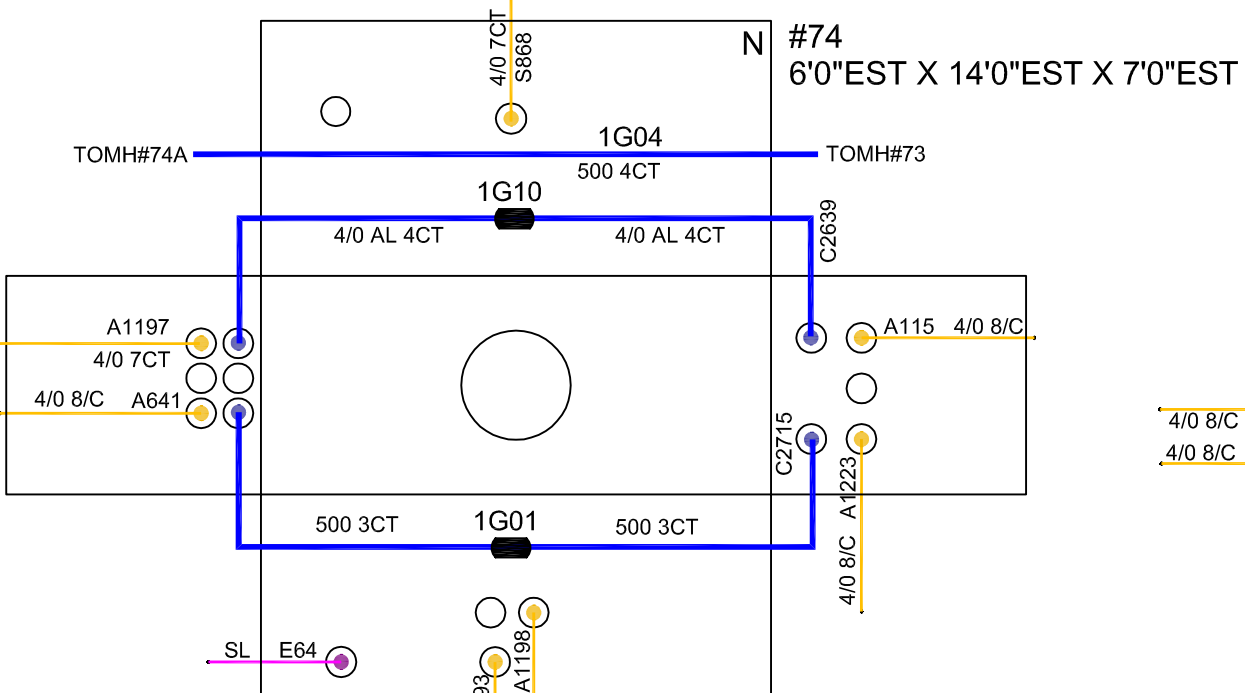
#76
3'7" X 4'8" X 3'10"



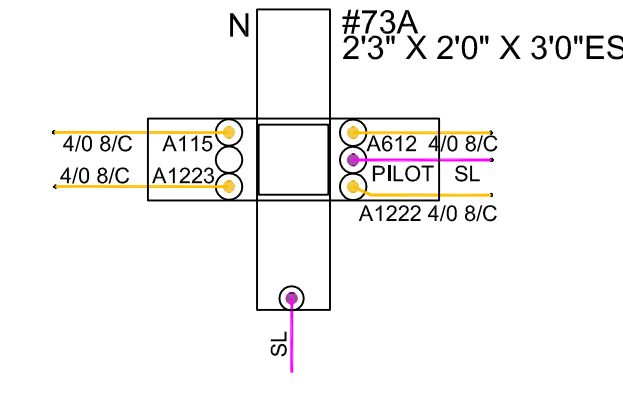
#844
7'0" X 16'0" X 9'0" EST



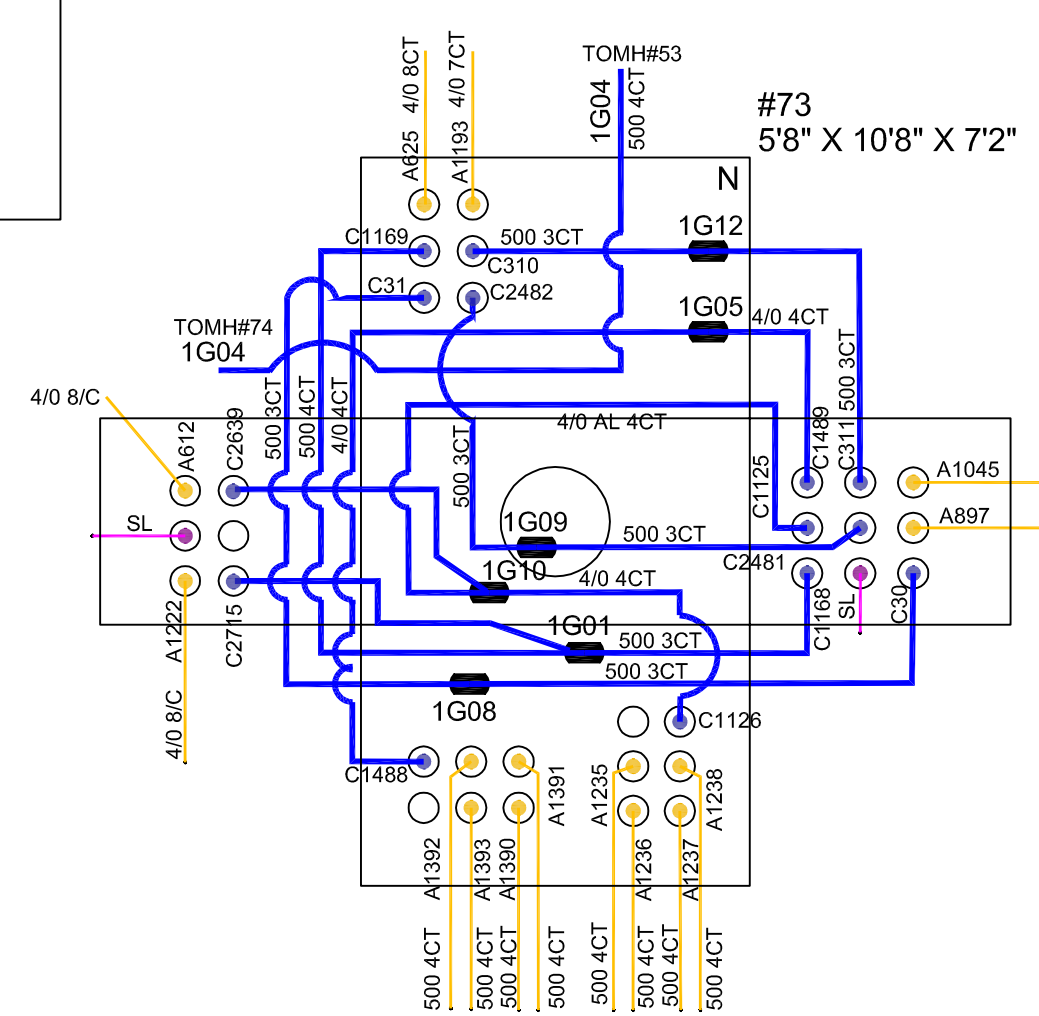
#74
6'0" EST X 14'0" EST X 7'0" EST



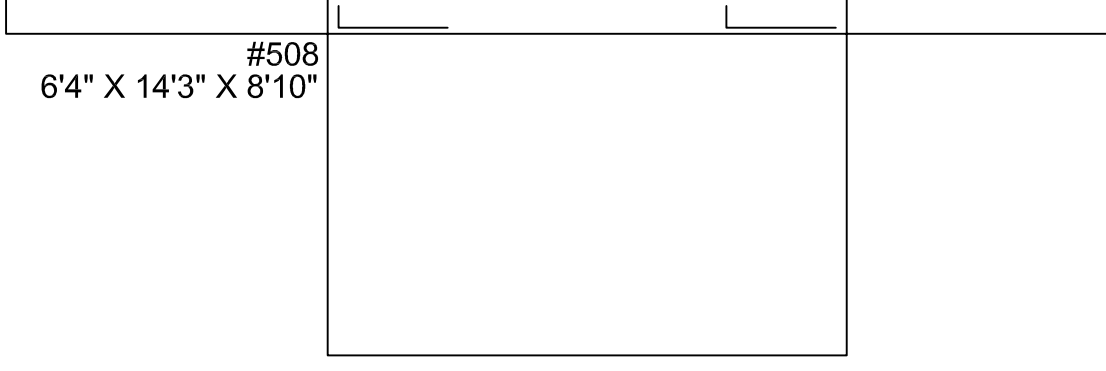
#73A
2'3" X 2'0" X 3'0" EST



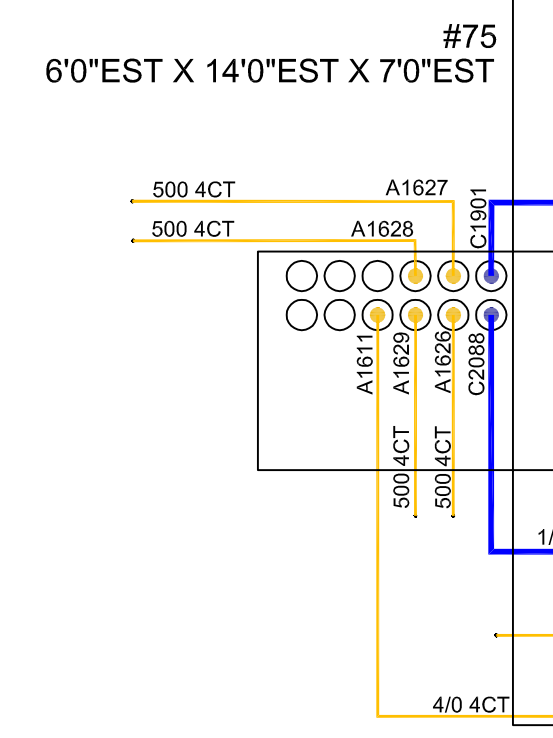
#73
5'8" X 10'8" X 7'2"



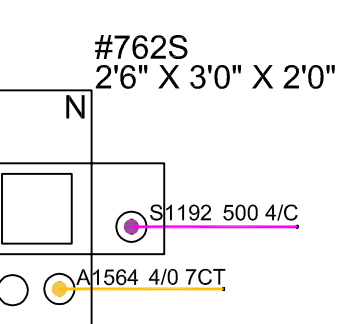
#508
6'4" X 14'3" X 8'10"



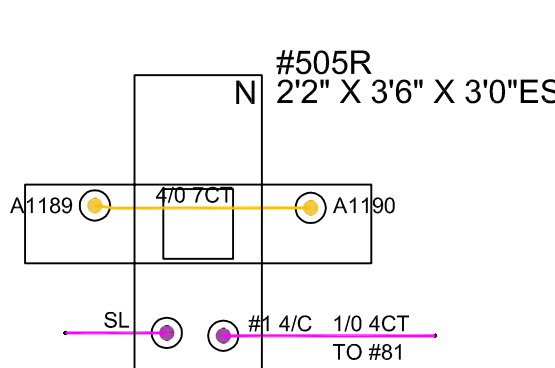
#75
6'0" EST X 14'0" EST X 7'0" EST



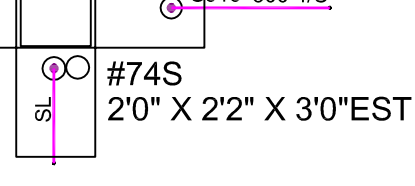
#762S
2'6" X 3'0" X 2'0"



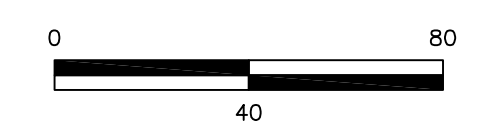
#505R
2'2" X 3'6" X 3'0" EST



#74S
2'0" X 2'2" X 3'0" EST



ALL SCHEMATIC UG STRUCTURES ARE SCALED 3/16" = 10" UNLESS OTHERWISE SPECIFIED.



<p>PROPRIETARY INFORMATION: THE INFORMATION ON THIS MAP SHALL BE CONSIDERED PROPRIETARY TO NORTHEAST UTILITIES (NU) AND THE USER (WHICH SHALL BE DEFINED AS ANY PERSON OR ENTITY WHO HAS RECEIVED THE MAP THROUGH SALE, PURCHASE, EXCHANGE, GIFT, OR OTHERWISE) SHALL KEEP IT IN CONFIDENCE AND SHALL NOT FURNISH OR DISCLOSE IT TO ANY THIRD PARTY WITHOUT PRIOR WRITTEN PERMISSION OF NORTHEAST UTILITIES.</p>	<p>GAS</p> <p>WATER</p> <p>FIBER OPTICS</p> <p>SEWER DRAINAGE</p> <p>SEWER WASTE</p> <p>TELEPHONE</p> <p>STREET CENTER LINE</p> <p>EASEMENT</p> <p>MATCH LINE</p> <p>BUILDING FOOTPRINT</p> <p>LOT #, ADDRESS #</p>	<p>HANDHOLE</p> <p>PAD</p> <p>PAD MOUNTED SWITCHING CUBICLE ON HANDHOLE</p> <p>SWITCHING CUBICLE ON THREE PHASE PAD</p> <p>HEX</p> <p>PAD MOUNTED SWITCHING CUBICLE ON HEX</p> <p>SWITCHGEAR IN HANDHOLE</p> <p>SWITCHING CUBICLE ON MANHOLE</p>	<p>GEOGRAPHIC</p> <p>SWITCHGEAR IN PRIMARY HANDHOLE</p> <p>SWITCHING CUBICLE ON PRIMARY HANDHOLE</p> <p>SWITCHING CUBICLE ON PAD</p> <p>SUBMERSIBLE TRANSFORMER</p> <p>PAD MOUNTED TRANSFORMER</p> <p>ELECTRICAL ENCLOSURE</p>	<p>SCHEMATIC</p> <p>MANHOLE, PULL BOX OR SERVICE BOX</p> <p>VAULT</p> <p>POLE, ELEC, 100%, JOINT</p> <p>POL, TEL, 100%, JOINT</p> <p>US POLE</p> <p>POLE PRIVATE</p> <p>POLE, PUSH BRACE</p> <p>TOWER</p> <p>TEMP DEAD END, PRIMARY OR STAND PIPE, SECONDARY</p> <p>LAWN BOX, SECONDARY</p> <p>ENCLOSURE, SECONDARY</p> <p>SLAB</p>	<p>MANHOLE, VAULT, PULL BOX, SERVICE BOX</p> <p>HEX</p> <p>COVERS</p> <p>DUCT BANKS</p> <p>DUCT BANK, LINE TYPE</p> <p>CONDUIT, LINE TYPE</p> <p>DUCT, VACANT, PRIMARY SEC, CONTROL, ST LIGHT, NETWORK, CAPPED, NEUTRAL, FIBER OPTICS</p>	<p>SCHEMATIC</p> <p>PRIMARY SINGLE PHASE</p> <p>PRIMARY TWO PHASE</p> <p>PRIMARY THREE PHASE</p> <p>SCHEM PRIM SINGLE PHASE</p> <p>SCHEM PRIM TWO PHASE</p> <p>SCHEM PRIM THREE PHASE</p> <p>SECONDARY, SERVICE</p> <p>SCHEM SEC, SERVICE</p> <p>SECONDARY NETWORK</p> <p>FIBER OPTIC</p> <p>TOWN LINE</p> <p>LOT LINE, ROW</p> <p>EDGE OF PAVEMENT</p> <p>HYDROLOGY</p> <p>RAILROAD</p> <p>FENCE</p>	<p>OH</p> <p>UG</p> <p>RECLOSER, RADIAL, TIE</p> <p>SECTIONALIZING, MIDPOINT, SECTIONALIZER, VOLTAGE SCT</p> <p>SCADA, COMMISSIONED</p> <p>DISCONNECT, OPEN, CLOSED</p> <p>SWITCH, GANG OPERATED, OPEN, CLOSED</p> <p>CUTOUT OR FUSE BOX, OPEN, CLOSED</p> <p>SWITCHGEAR W/CABINET</p> <p>MULTI-POSITIONAL SWITCH</p> <p>AUTO THROW OVER CIRCUIT BREAKER, OPEN, CLOSED</p>	<p>SCHEMATIC</p> <p>CAPACITOR</p> <p>FAULT INDICATOR</p> <p>VOLTAGE REGULATOR</p> <p>CO-GENERATOR</p> <p>PRIMARY METER</p> <p>AREA LIGHT</p> <p>AREA LIGHT, PRIVATE</p> <p>FLOOD LIGHT</p> <p>FLOOD LIGHT, PRIVATE</p> <p>SERIES</p> <p>SERIES, PRIVATE</p> <p>RISER, PRIM, SEC OR SERV</p>	<p>OH</p> <p>UG</p> <p>TRANSFORMER, OH, UG</p> <p>DBUG TRANSFORMER, RADIAL, LOOP, FEED THRU</p> <p>STEP TRANSFORMER</p> <p>WIRE CHANGE, PRIM, SEC</p> <p>OPEN POINT GIS, PRIM, SEC</p> <p>DEADEND, PRIMARY, SEC</p> <p>JUMPER, PRIMARY, SEC</p> <p>SPLICE</p> <p>BUSHING</p> <p>ELBOW, ENERGIZED, PARKED</p> <p>CABLE TAP</p> <p>TWO WAY, THREE WAY</p> <p>TIE CONNECTOR</p>	<p>OH</p> <p>UG</p> <p>BUS BAR, TERMINAL</p> <p>CONNECTOR</p> <p>CRAB OR LIMITER</p> <p>LIMITER, GEOGRAPHIC, STRAIGHT LINE</p> <p>FARGO</p> <p>FAULT INTERRUPTER</p> <p>OPEN, CLOSED</p> <p>GROUND</p> <p>ARRESTER</p> <p>SERVICE POINT, ELECTRIC, PICTITIOUS</p> <p>STAND PIPE, NOT IN SERVICE, IN SERVICE</p>	<p>PRIMARY TIE POINT</p> <p>SECONDARY TIE POINT</p> <p>DISTRIBUTION TIE POINT</p> <p>DISTRIBUTION LOCATION</p> <p>ELECTRIC NOTE</p> <p>DIRECTION OF FEED ARROWS</p> <p>FUTURE BUILT AND CUSTOMER OWNED</p> <p>LIMIT OF JURISDICTION</p> <p>SUBSTATION</p>	<p>REVISIONS</p> <table border="1"> <thead> <tr> <th>DATE</th> <th>BY</th> <th>DESCRIPTION</th> </tr> </thead> <tbody> <tr> <td>5/7/15</td> <td>J</td> <td>SEC UPGRADE</td> </tr> <tr> <td>12/18/15</td> <td>J</td> <td>ADDED 1G04</td> </tr> <tr> <td>2/11/17</td> <td>J</td> <td>RELAY PL OH SEC</td> </tr> </tbody> </table>	DATE	BY	DESCRIPTION	5/7/15	J	SEC UPGRADE	12/18/15	J	ADDED 1G04	2/11/17	J	RELAY PL OH SEC	<p>NORTHEAST UTILITIES CONNECTICUT LIGHT & POWER COMPANY</p> <p>UNDERGROUND (UG) MAP STAMFORD</p> <p>MAIN ST CLINTON AVE W MAIN ST WASHINGTON BLVD RIPPOWAN PL RELAY PL</p> <table border="1"> <thead> <tr> <th>DRAWN BY</th> <th>DATE</th> <th>CHECKED BY</th> <th>DATE</th> <th>ISSUED BY</th> <th>DATE</th> </tr> </thead> <tbody> <tr> <td>SHB</td> <td>10/26/05</td> <td>JC</td> <td>2/25/10</td> <td>JC</td> <td>2/25/10</td> </tr> </tbody> </table> <p>SCALE 1" = 40' 1 OF 14 UG MAIN ST STAMFORD 01</p>	DRAWN BY	DATE	CHECKED BY	DATE	ISSUED BY	DATE	SHB	10/26/05	JC	2/25/10	JC	2/25/10
	DATE	BY	DESCRIPTION																																		
5/7/15	J	SEC UPGRADE																																			
12/18/15	J	ADDED 1G04																																			
2/11/17	J	RELAY PL OH SEC																																			
DRAWN BY	DATE	CHECKED BY	DATE	ISSUED BY	DATE																																
SHB	10/26/05	JC	2/25/10	JC	2/25/10																																