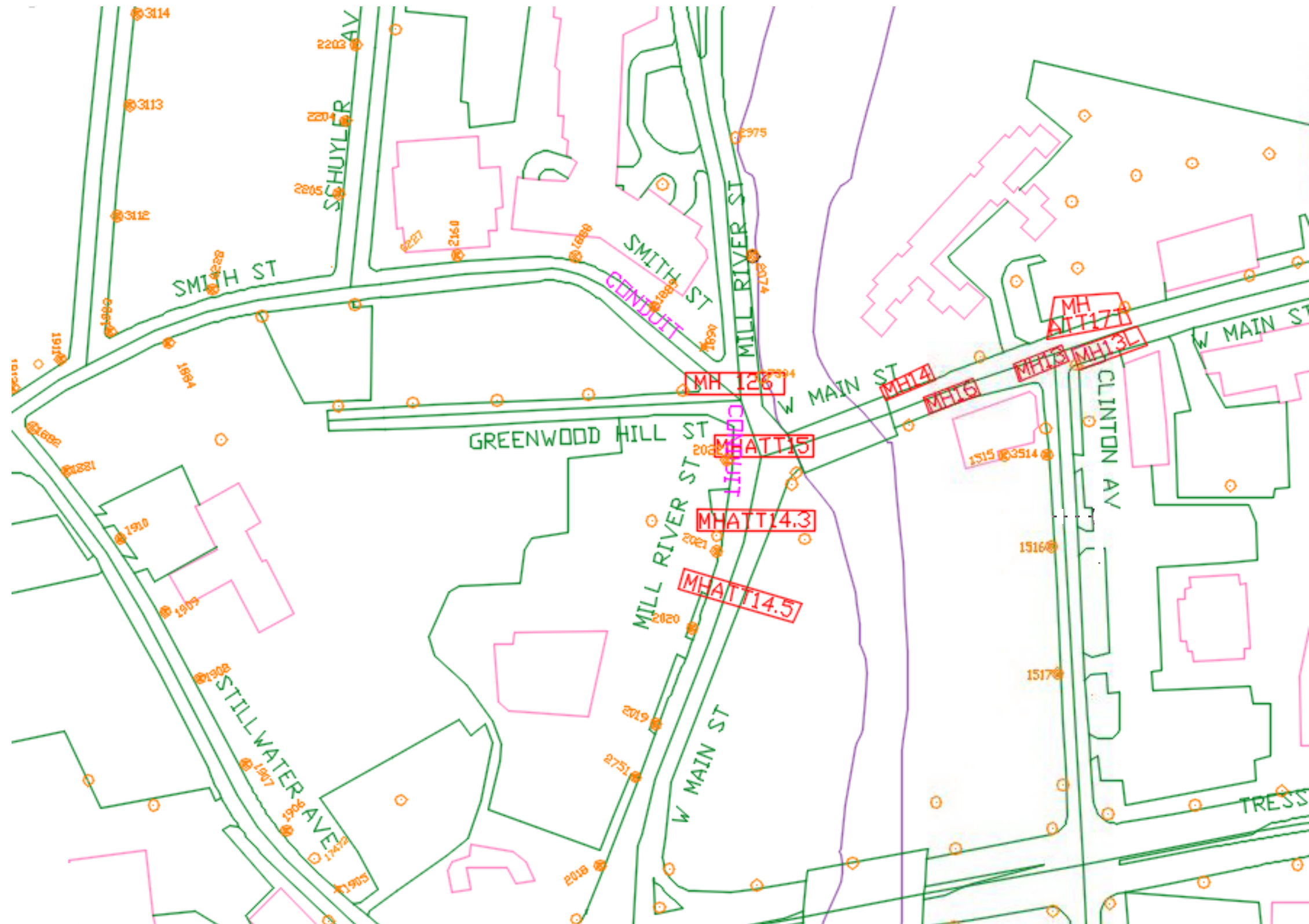
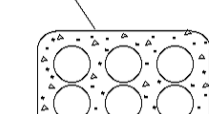


FOR MORE ACCURATE LOCATION OF MANHOLES, SEE ATTACHED CONDUIT RECORDS. CONDUIT IS ALSO PRESENT.



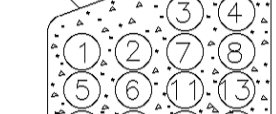
THE SO. NEW ENG. TEL. CO.

STRUCTURE
6-4" F



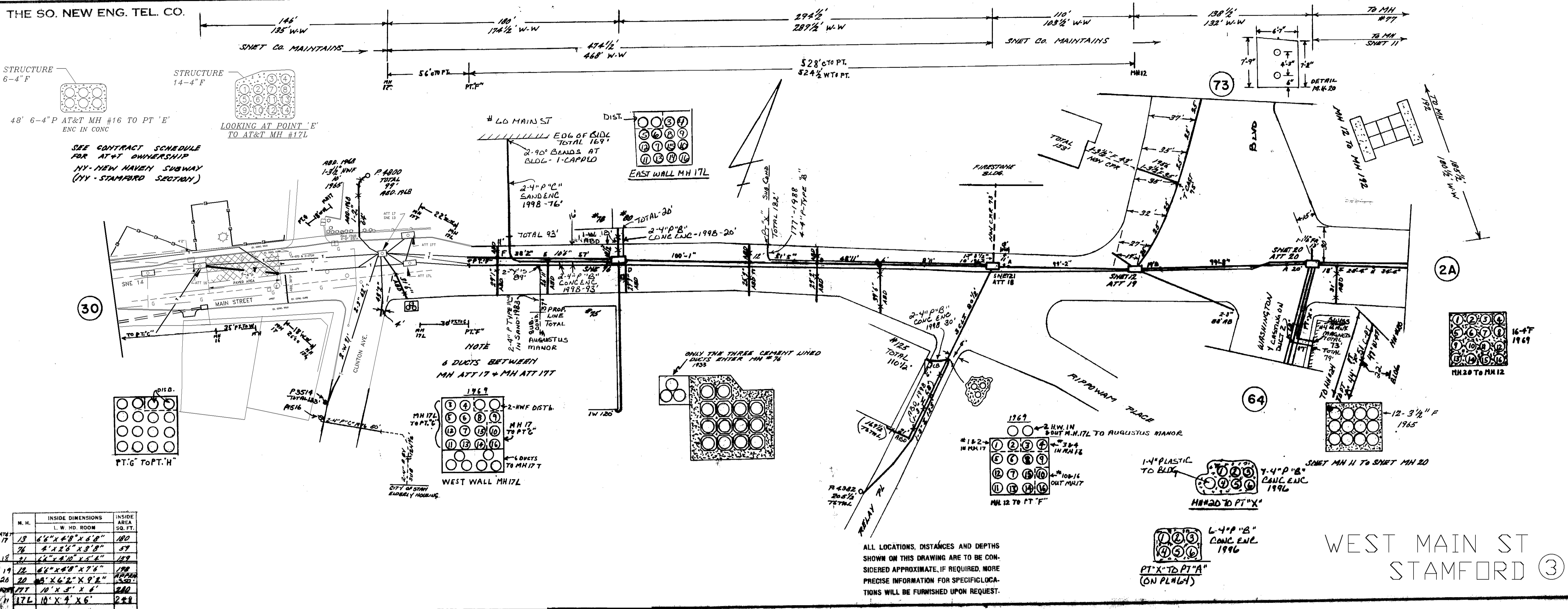
48' 6-4" P AT&T MH #16 TO PT 'E'
ENC IN CONC

STRUCTURE
14-4" F



LOOKING AT POINT 'E'
TO AT&T MH #17L

SEE CONTRACT SCHEDULE
FOR AT&T OWNERSHIP
NY-NEW HAVEN SUBWAY
(NY-STAMFORD SECTION)

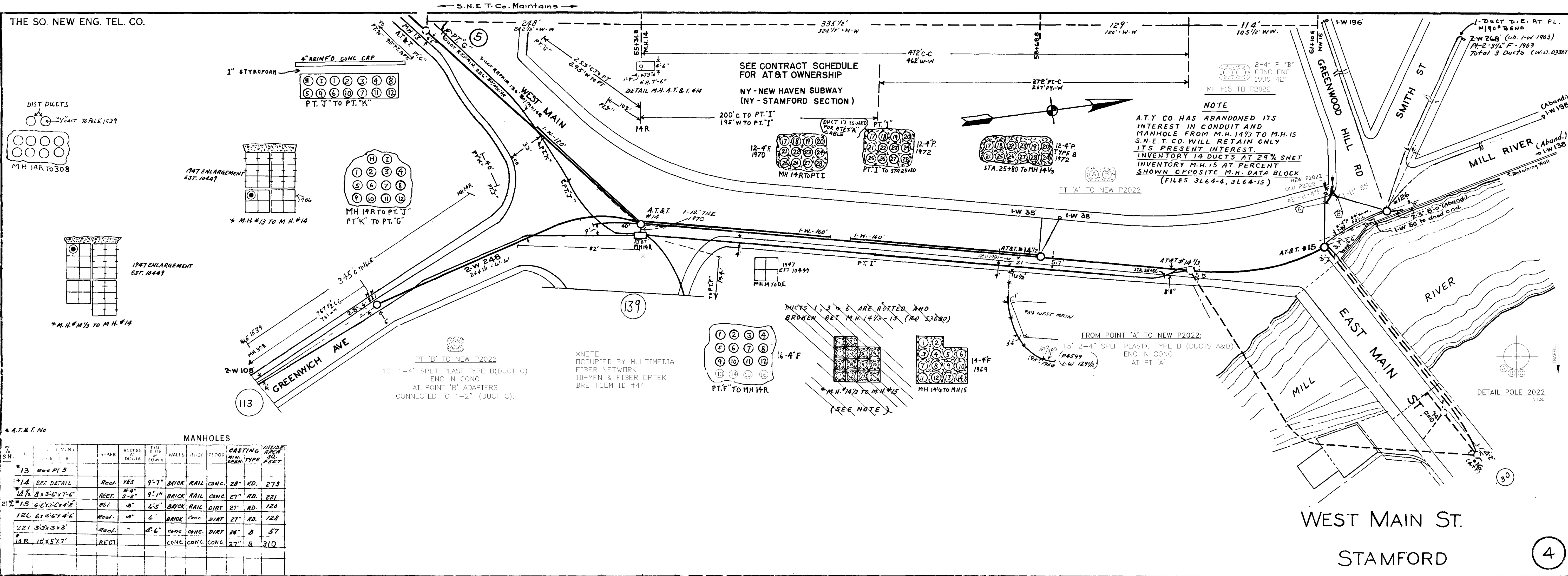


N. H.	INSIDE DIMENSIONS L. W. HD. ROOM	INSIDE AREA SQ. FT.
17	13 6'6" x 4'8" x 6'8"	180
18	7 4' x 2'6" x 9'8"	57
18	21 6'6" x 4'10" x 5'6"	129
19	12 6'6" x 4'8" x 7'6"	198
20	20 4'8" x 6'2" x 9'8"	350
177	10' x 4' x 6'	228
17L	10' x 4' x 6'	228

ALL LOCATIONS, DISTANCES AND DEPTHS
SHOWN ON THIS DRAWING ARE TO BE CON-
SIDERED APPROXIMATE. IF REQUIRED, MORE
PRECISE INFORMATION FOR SPECIFIC LOCA-
TIONS WILL BE FURNISHED UPON REQUEST.

WEST MAIN ST
STAMFORD ③

THE SO. NEW ENG. TEL. CO.



* A.T.&T. No

7/2	SN	MANHOLES	SHAPE	RECESS	RECESS	WALLS	FLOOR	CASTING	WALL	HEIGHT
1/2	1/2	1/2	1/2	1/2	1/2	1/2	1/2	1/2	1/2	1/2
	13	see P1 5								
	14	see DETAIL	Reol.	YES	9'-7"	BRICK RAIL CONC.	28"	KD.	273	
	14 1/2	8'x3'6"x7'-6"	RECT.	S-2"	9'-1"	BRICK RAIL CONC.	27"	KD.	221	
21 7/8	15	6'-6"x3'-6"x4'-8"	PSI.	S	6'-5"	BRICK RAIL DIRT	27"	KD.	124	
	126	6'x4'6"x4'6"	Reol.	S	6'	BRICK CONC. DIRT	27"	KD.	128	
	221	3'3"x3'x3'	Reol.	-	4'-6"	CONC. CONC. DIRT	26"	B	57	
	14 R	10'x5'x7'	RECT.			CONC CONC CONC.	27"	B	310	

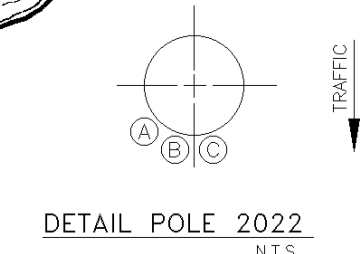
NOTE
 A.T.T. CO. HAS ABANDONED ITS INTEREST IN CONDUIT AND MANHOLE FROM M.H. 14 1/2 TO M.H. 15 S.N.E.T. CO. WILL RETAIN ONLY ITS PRESENT INTEREST. INVENTORY 14 DUCTS AT 29% SNET INVENTORY M.H. 15 AT PERCENT SHOWN OPPOSITE M.H. DATA BLOCK (FILES 3L64-4, 3L64-15)

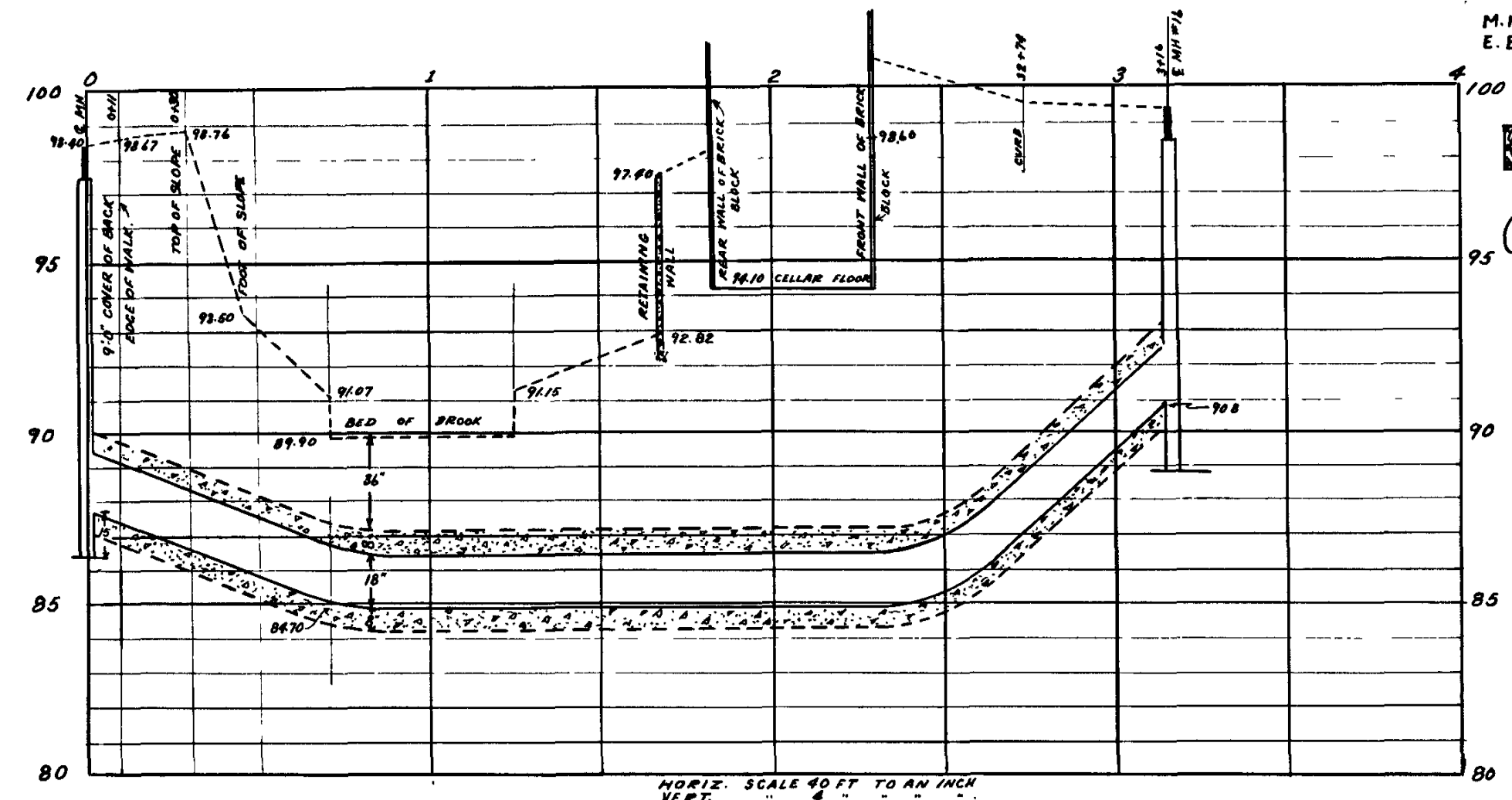
SEE CONTRACT SCHEDULE FOR AT&T OWNERSHIP
 NY-NEW HAVEN SUBWAY (NY-STAMFORD SECTION)

*NOTE OCCUPIED BY MULTIMEDIA FIBER NETWORK ID-MFN & FIBER OPTIK BRETTCDM ID #44

PT 'B' TO NEW P2022
 10' 1-4" SPLIT PLAST TYPE B (DUCT C) ENC IN CONC AT POINT 'B' ADAPTERS CONNECTED TO 1-2" (DUCT C).

FROM POINT 'A' TO NEW P2022:
 15' 2-4" SPLIT PLASTIC TYPE B (DUCTS A&B) ENC IN CONC AT PT 'A'





1	2	3	4
5	6	7	8
9	10	11	12
13	14	15	16

SECTION A
M.H. 15 TO W. BRIDGE ABUTMENT-16'
E. BRIDGE ABUTMENT TO M.H. 16-73'

5	9	13	15	11	2	3	4
---	---	----	----	----	---	---	---

SECTION B
(REMAINDER OF DUCTS)
(UNDER BRIDGE REMOVED)

WITH THE EXCEPTION OF ONE
CITY DUCT ANY OF THESE DUCTS
MAY BE USED FOR SNET. CABLES.

NOTE
A.T.T. CO. HAS ABANDONED ITS
INTEREST IN CONDUIT AND
MANHOLE FROM M.H. 15 TO 16
S.N.E.T. CO. WILL RETAIN ONLY
ITS PRESENT 27% IN CONDUIT.
8 ABANDONED A.T.T. CO. DUCTS
HAVE BEEN REMOVED BETWEEN
BRIDGE ABUTMENTS-1942-WO-87933
INVENTORY ORIGINAL NUMBER
OF DUCTS (16) AT 27% SNET.
INVENTORY M.H. 15 AT %
SHOWN OPP. M.H. BLOCK (C.P. 4)
(FILE 3L64-4)
ALL MAINTENANCE BETWEEN
M.H. 15 & M.H. 16 WILL BE 100% SNET.

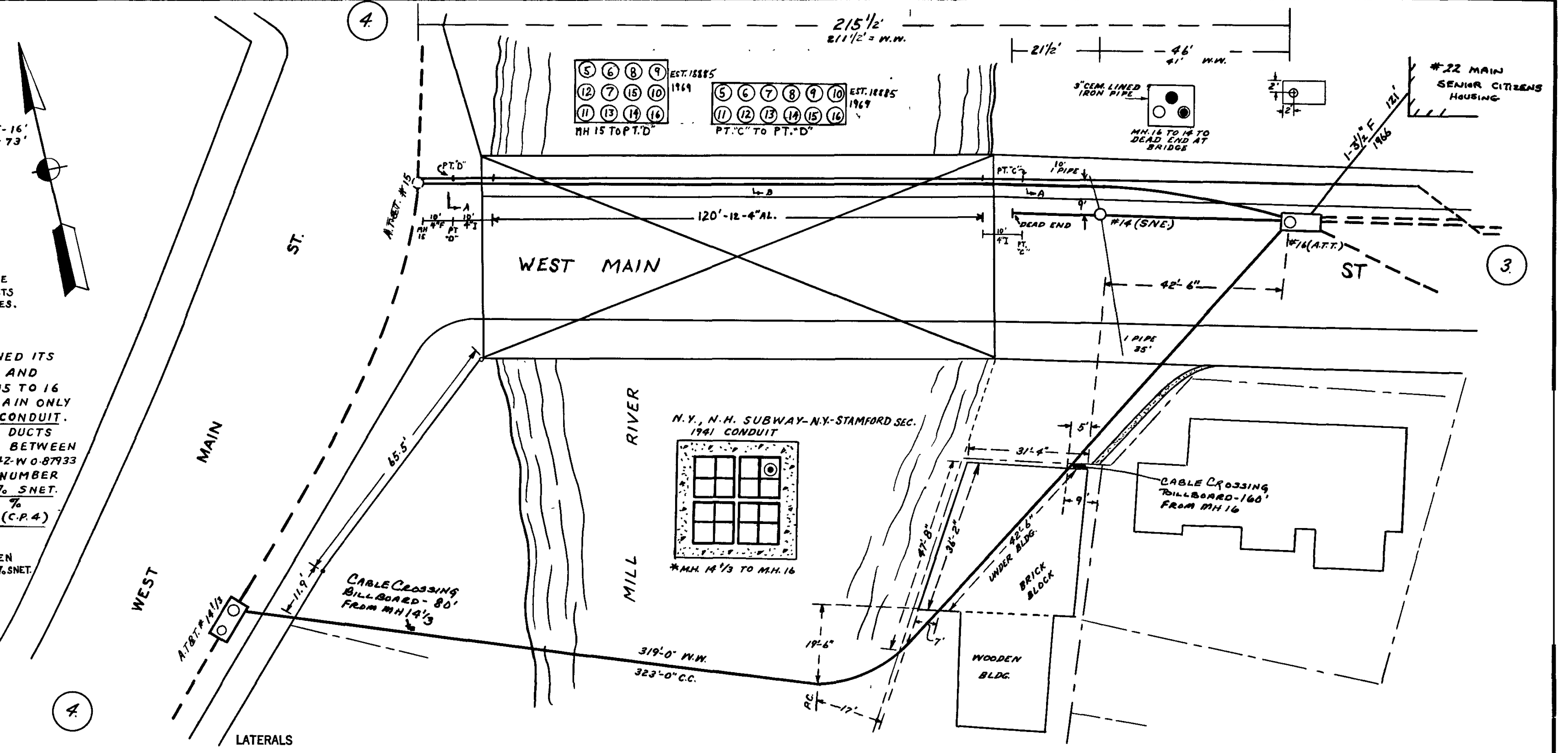
VERTICAL SCALE 40 FT TO AN INCH
1/4" = 1'

SEE CONTRACT SCHEDULE
FOR AT & T CO OWNERSHIP

NY - NEW HAVEN SUBWAY
(STAMFORD-BRIDGEPORT SECTION)

* A. T. & T. NO.

M.H.	INSIDE DIMENS. L.W. HD. ROOM	INSIDE AREA SQ. FT.
15	10' x 6' x 10'	360
16	10' x 6' x 7' 6"	297
16(SH)	6' x 3' 6" x 5'	110
16	10' 3/4" x 7' 8"	



WEST MAIN ST.
FROM EAST SIDE MILL RIVER
TO WEST SIDE
STAMFORD