

Water Supply Update

City of Stamford
Board of Representatives
Public Safety & Health Committee

October 1, 2020

Jeff Ulrich
Vice President of Supply and
Sustainability



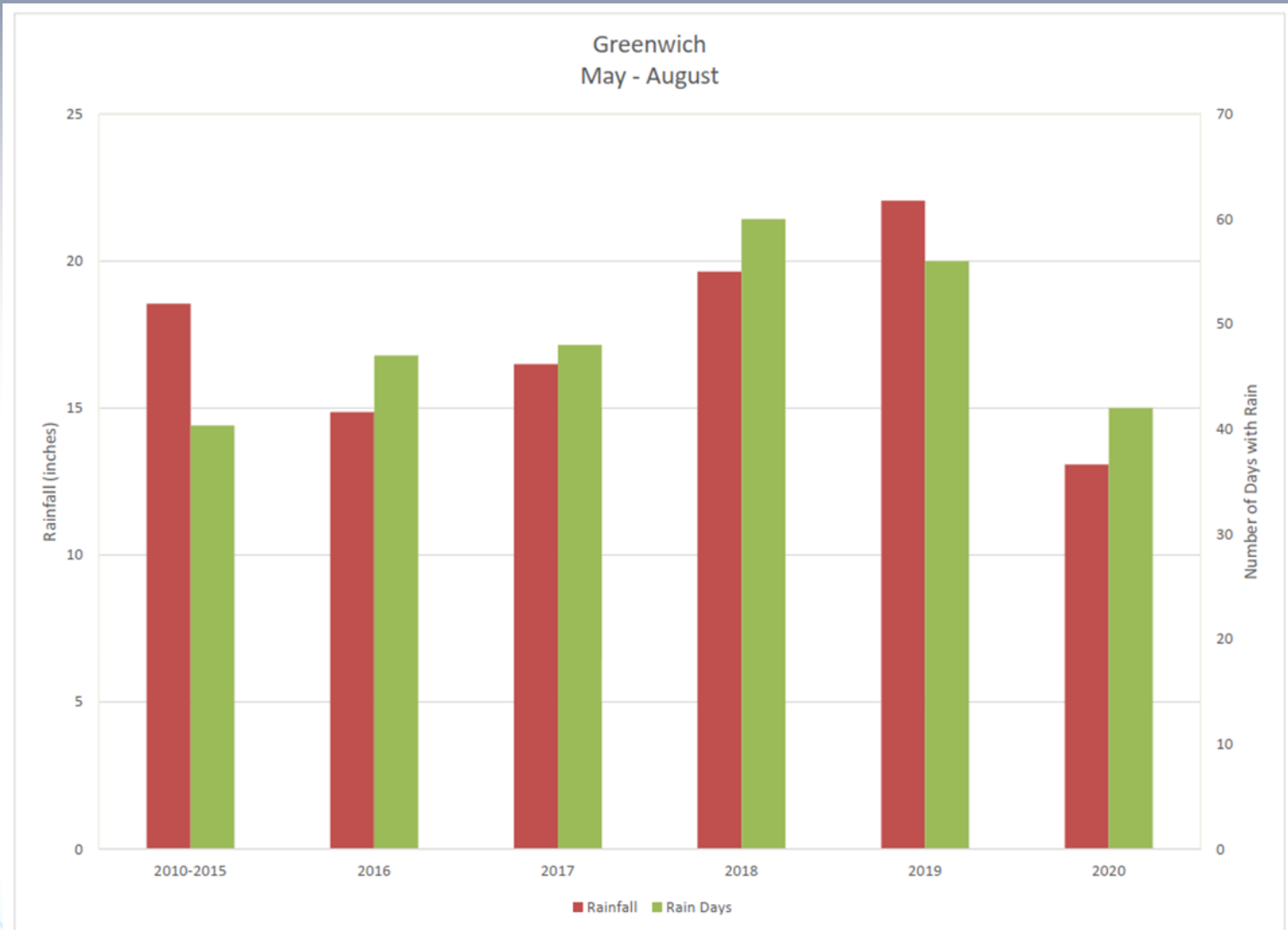
AQUARION
Water Company

Stewards of the Environment™

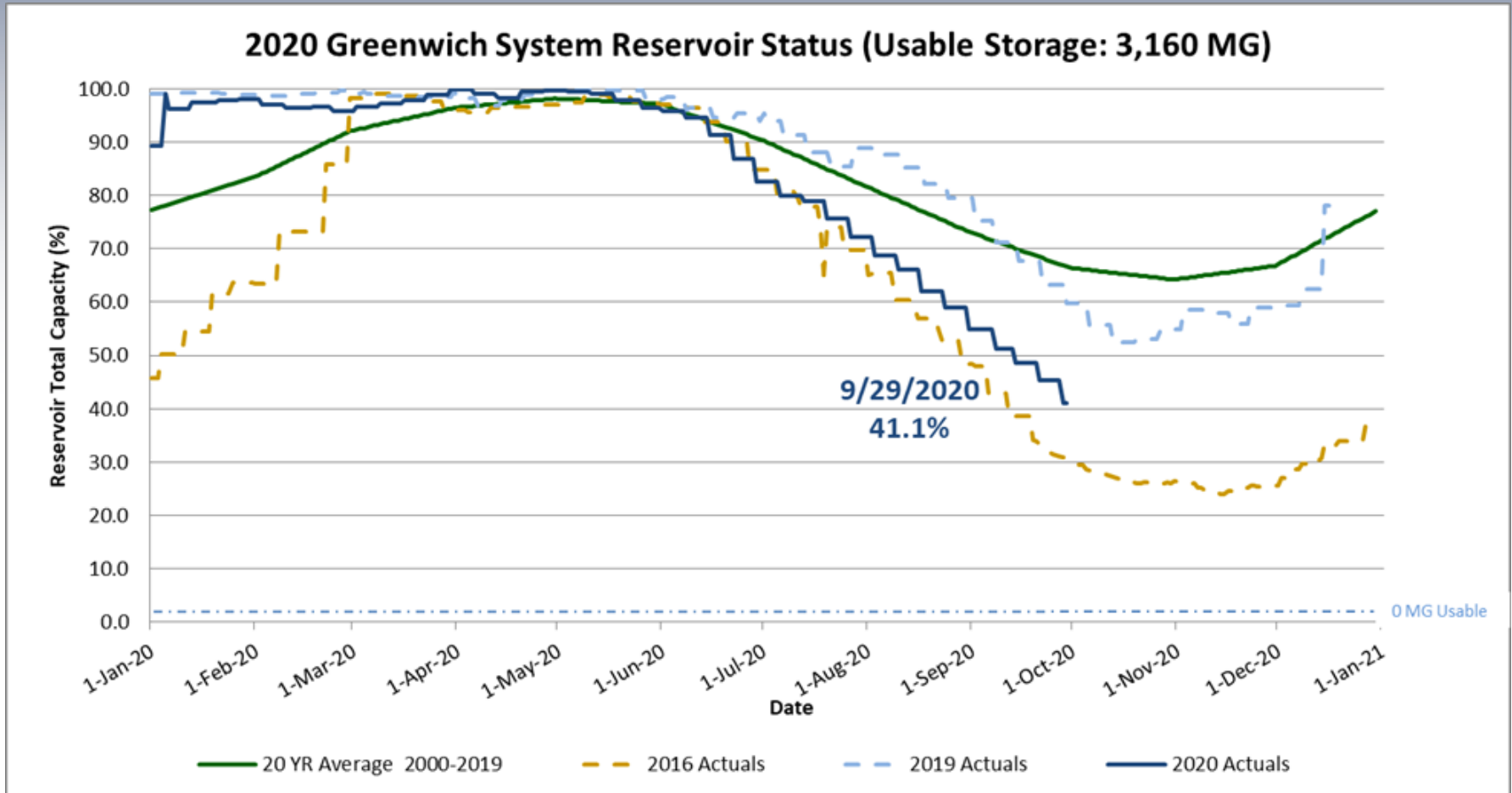
Bargh Reservoir – Fall 2016



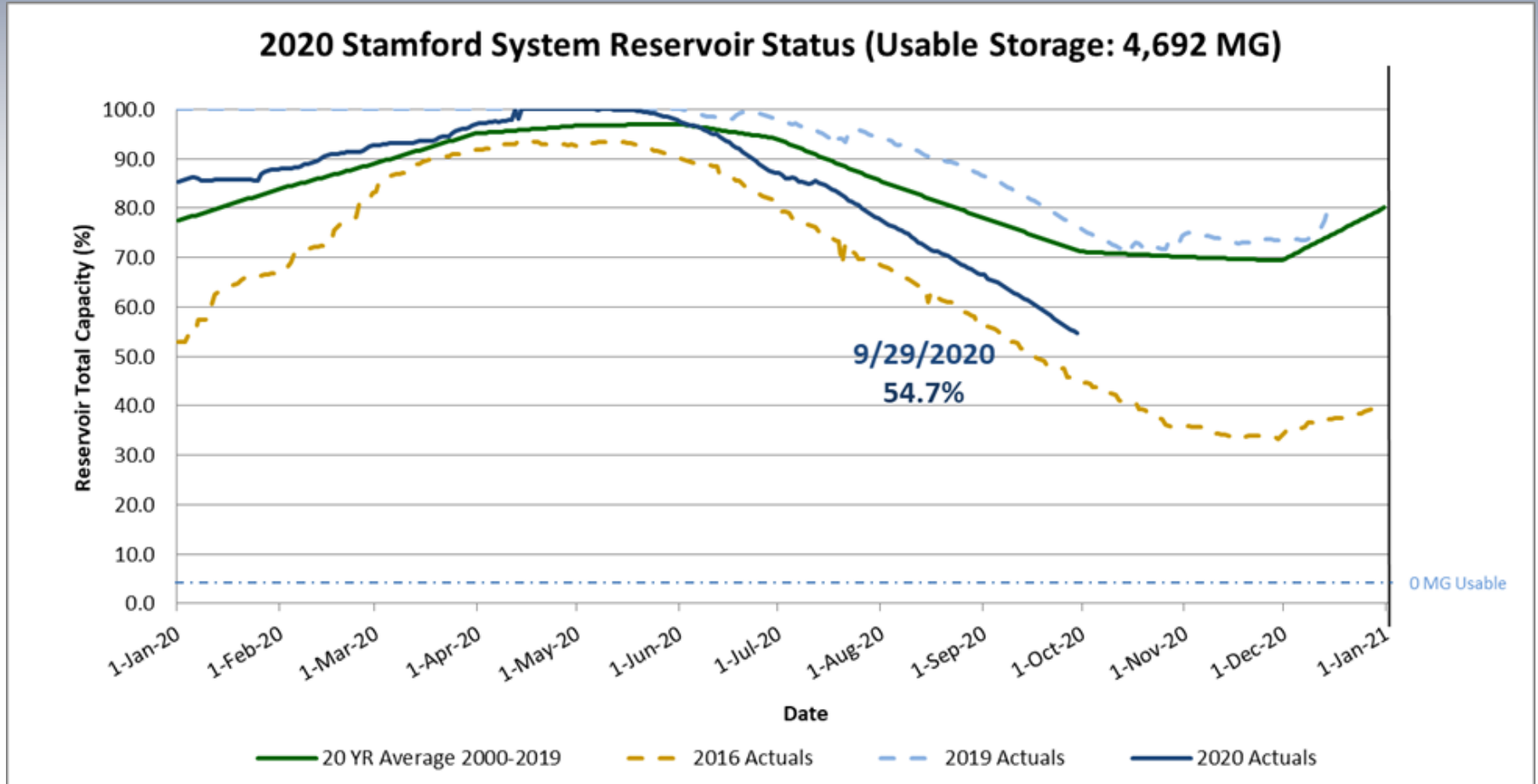
Rainfall



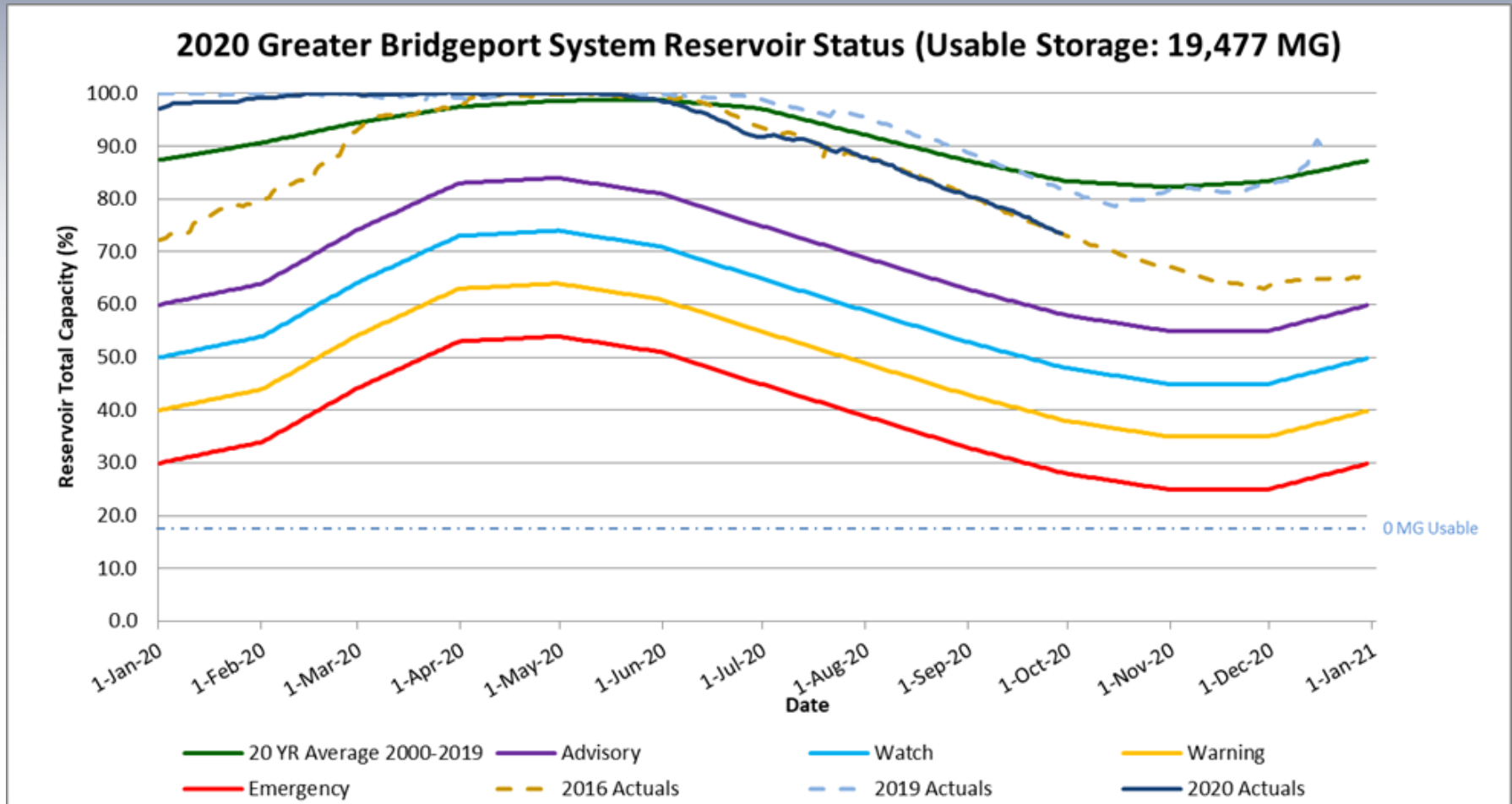
Greenwich Reservoirs



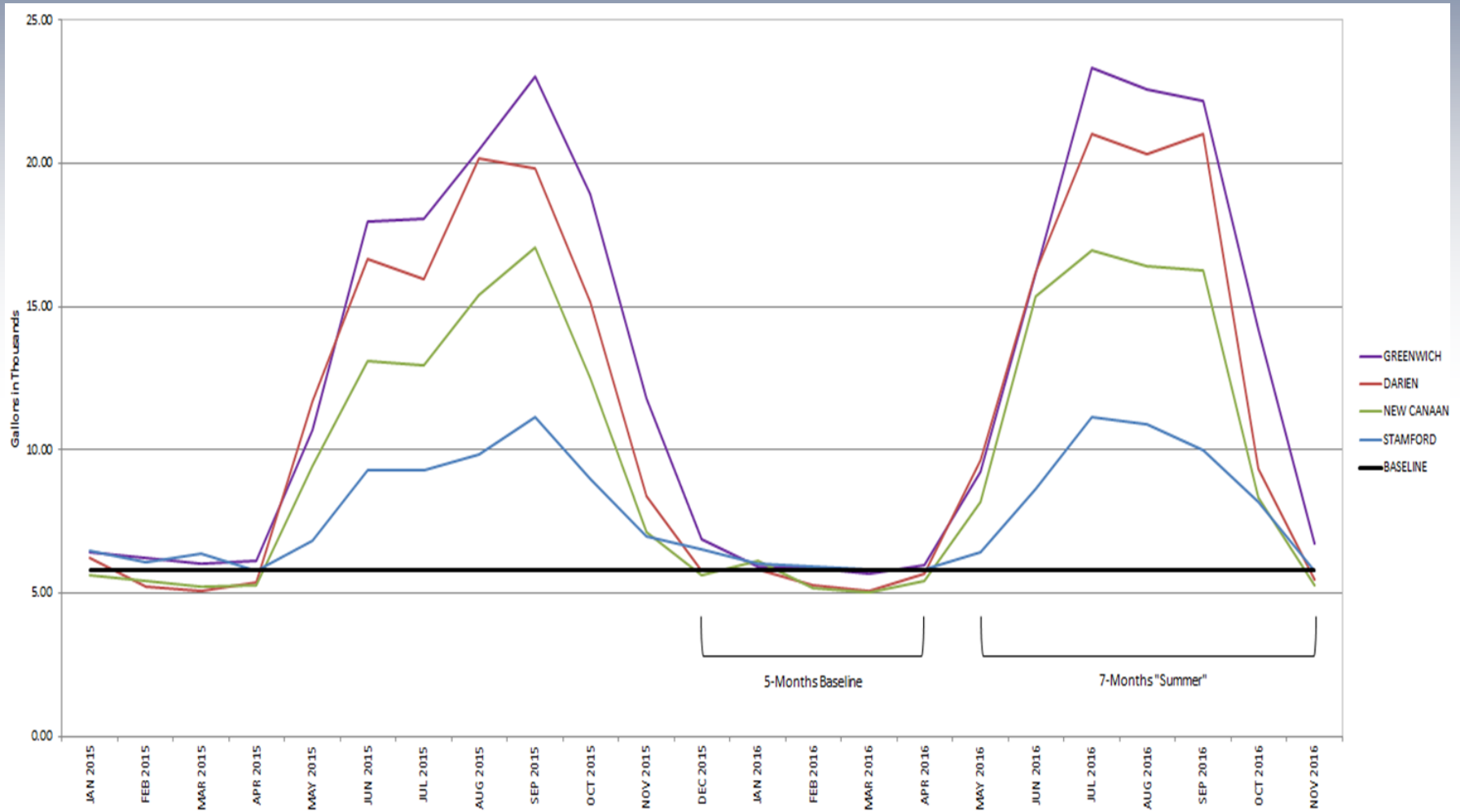
Stamford Reservoirs



Bridgeport Reservoirs

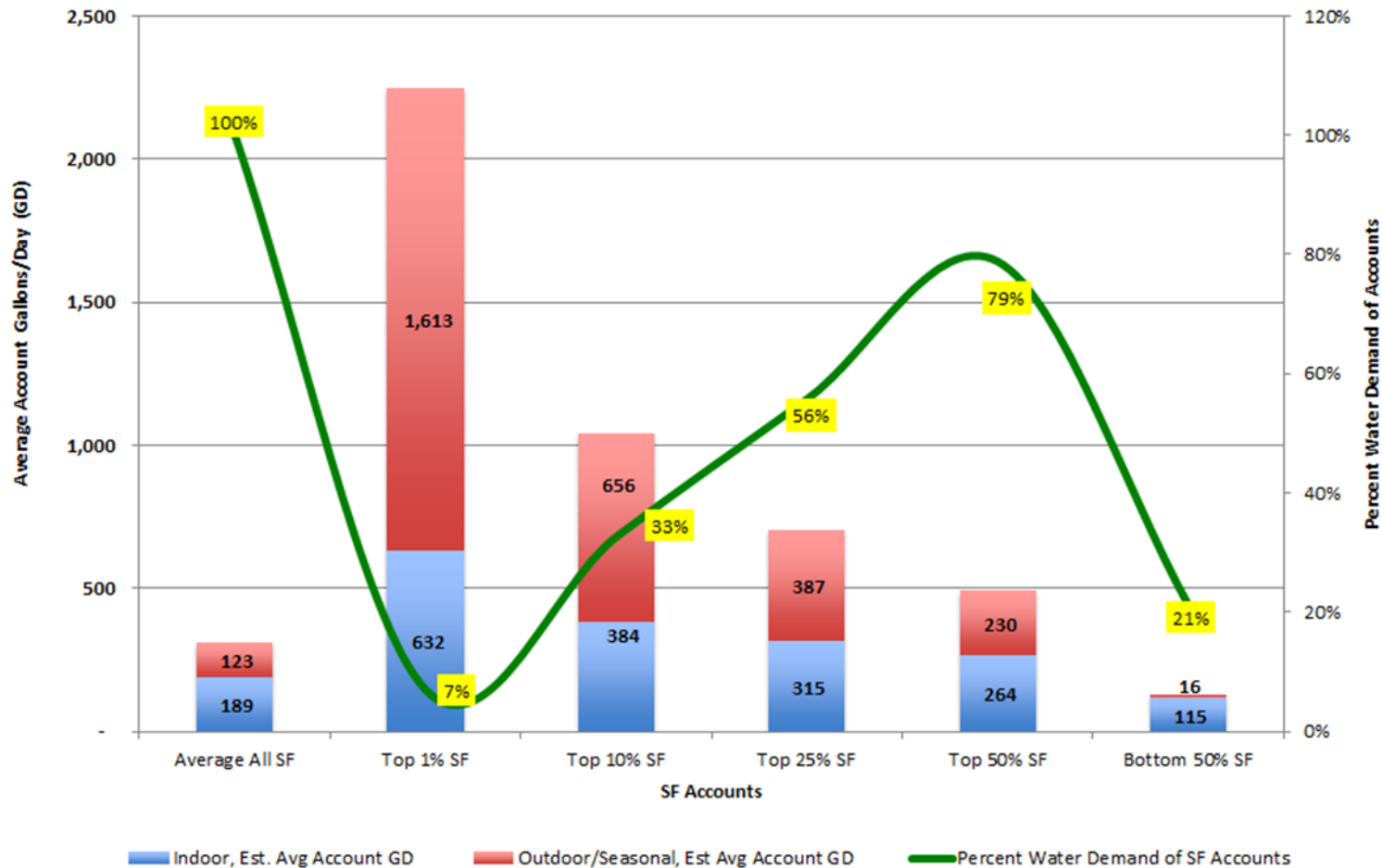


Average Residential Single Family Use



Single Family Use

Combined Greenwich, Stamford, Darien and New Canaan
Single-Family (SF) Customer Accounts: Average and Percentile Indoor and Outdoor/Seasonal Gallons Per Account Per Day, 2012-2014

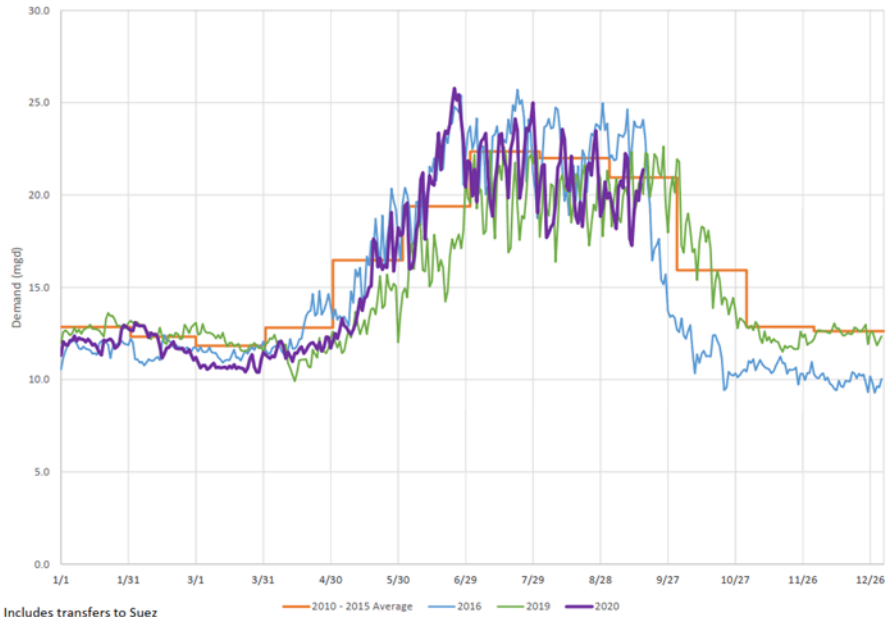


Analysis – 2 Day per Week Irrigation

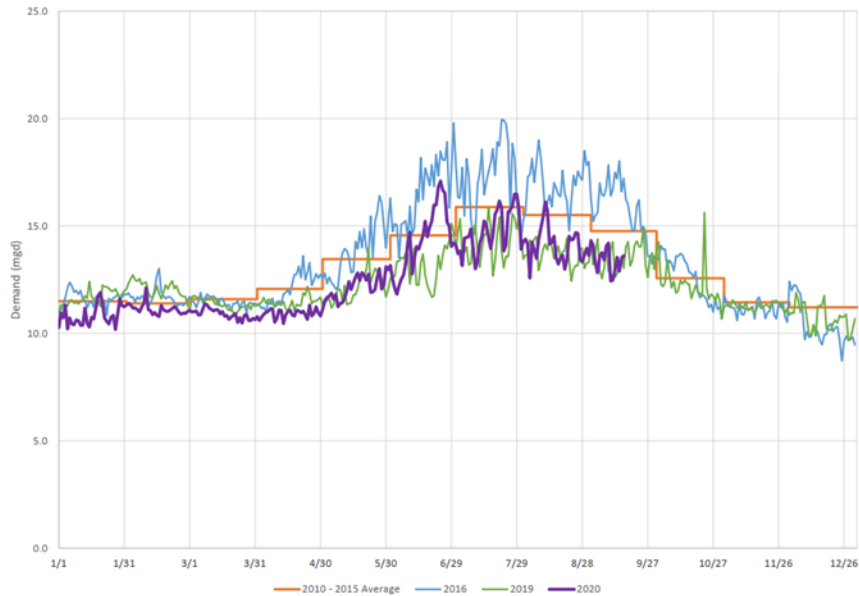
May through October	SWFC Demand (MGD)
2010 - 2015	35.08
2016	35.73
2017	31.28
2018	30.85
2019	30.76

	2017	2018	2019
Difference from 2010-2015 (MG)	699	780	794

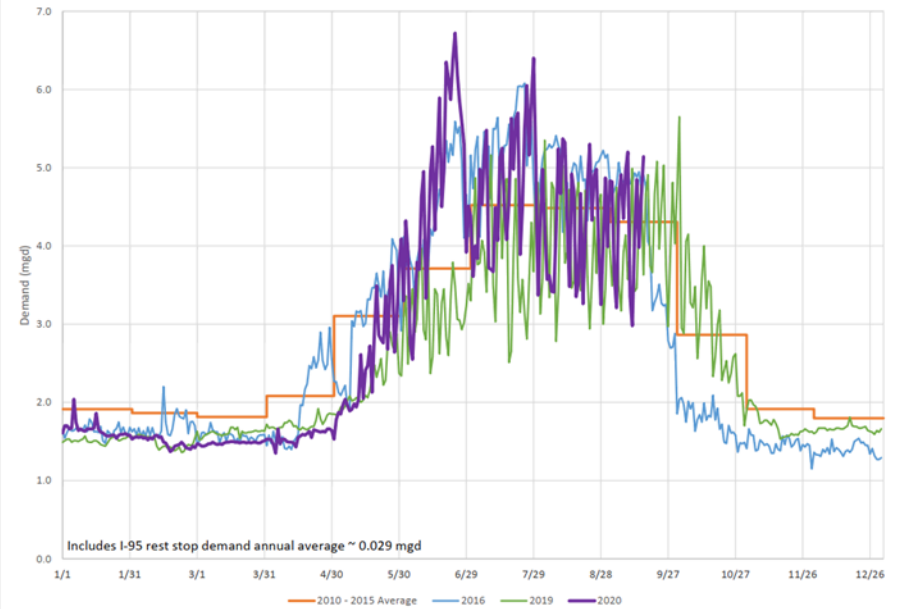
Greenwich Demand Summary



Stamford Demand Summary



Darien Demand Summary



Summary

- Very dry year
- Reservoirs are significantly below normal
- COVID impacts
 - People home
 - Doing projects
- Going back to old habits
- Turn off irrigation systems
 - Its late in the year
 - Daytime highs in the 60's
- Reinvigorate conservation messaging in Spring of 2021



Questions