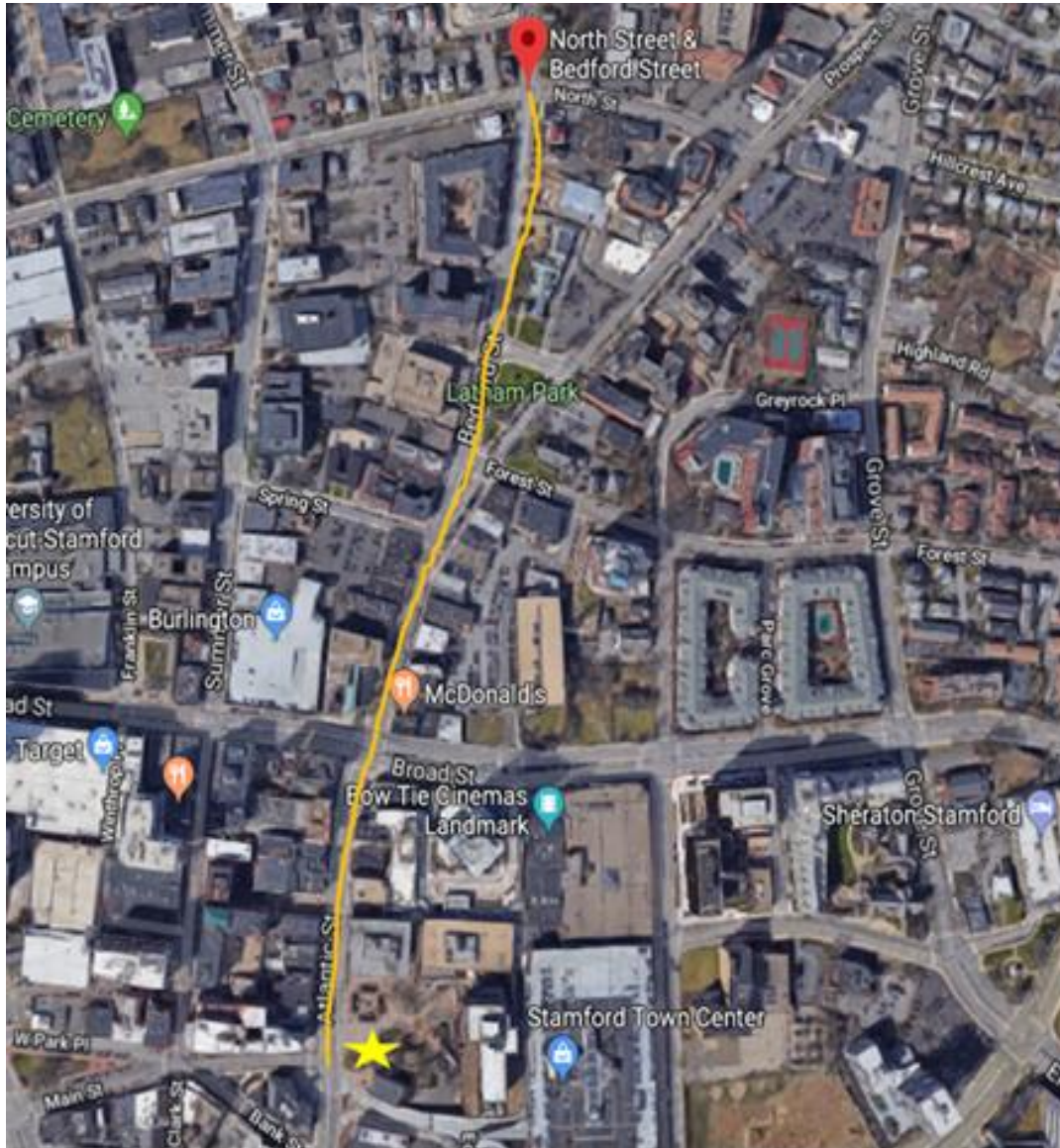


2019 Stamford Veterans Parade Instructions

- Please see details below.
- Please contact us with any questions! (203) 977-4842, (203) 977-5952, or stamfordpsec@stamfordct.gov!
- Please NO POLITICAL MARKETING OR INAPPROPRIATE MARKETING (YOU MAY BE ASKED TO NOT PARTICIPATE)
- LAST DAY TO REGISTER IS FRIDAY, NOVEMBER 8, 2019 NO LATER THAN 3:00 PM (vehicle insurance must be reviewed for approval before work day ends)
- LOOK FOR YOUR ORGANIZATION SIGN UPON ENTERING STAGING AREA
- ASK VOLUNTEERS WITH RED SHIRTS QUESTIONS!

MAP OVERVIEW OF ROUTE



Enter staging area on Hoyt Street onto Bedford Street directly in front of Police Station

Parade moves south on Bedford Street.

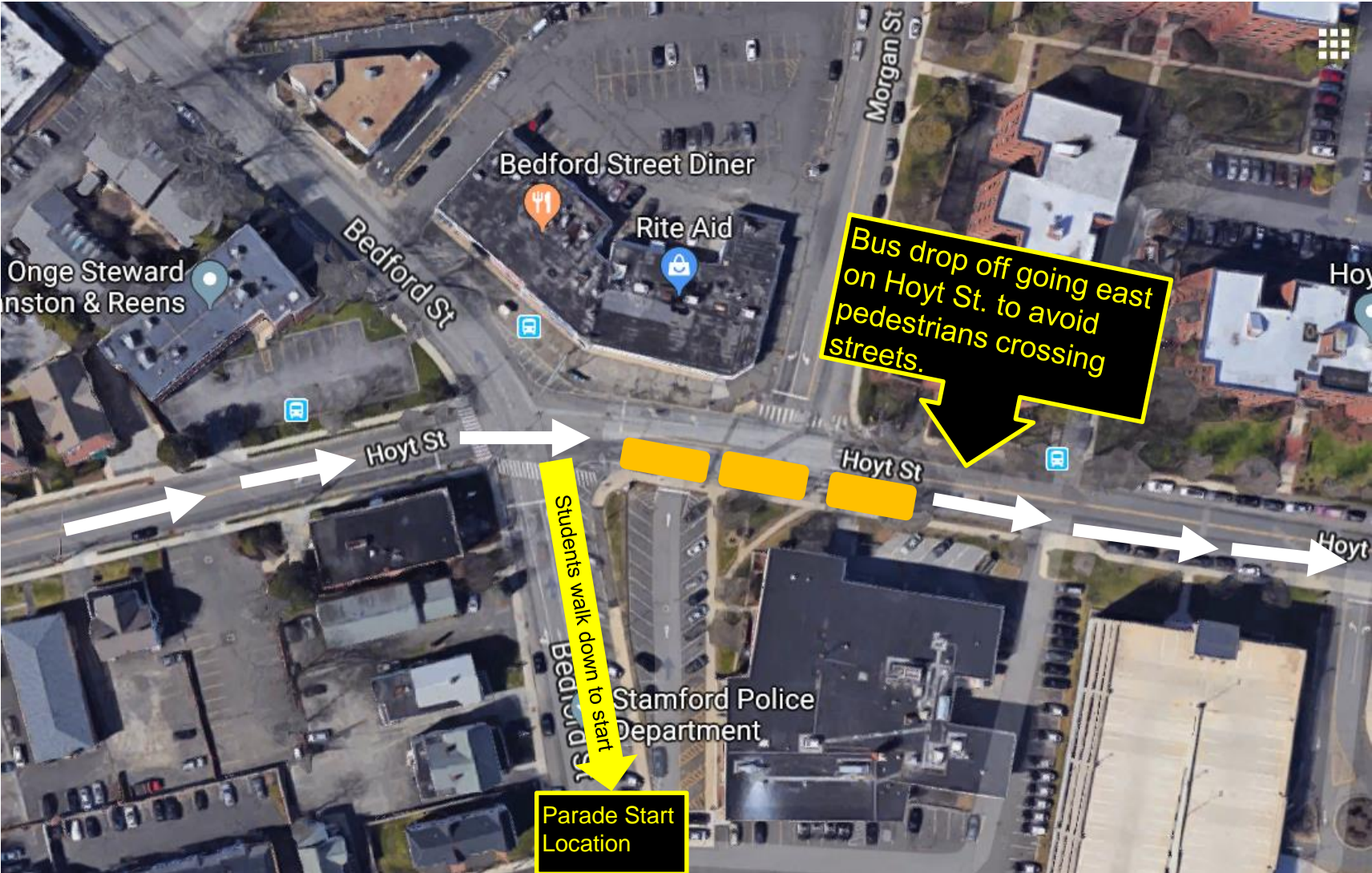
Parades crosses Broad Street onto Atlantic Street

Parade ends at Veterans Park

Re-Opening of Veterans Park Ceremony begins at 11:00 a.m.

Please park on Main Street or Bell Street if you are staying for Ceremony.

Drop off Location for Parade Start



STAGE AREA 850 BEDFORD STREET STAMFORD CT 06901



Parade Staging area is 850 Bedford Street, Stamford, CT 06901

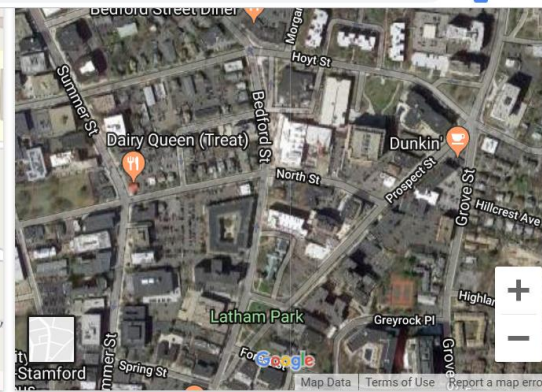
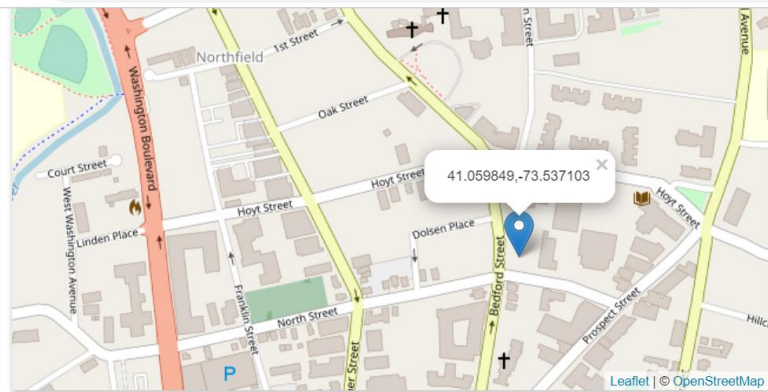
*Parade Vehicles that are being trailered in should arrive early. No later 8:50A.M. so that there is plenty of room if you plan to drive your trailer to this location and drop off parade vehicles.

*You can also park or truck & trailer at 22 Bell St. Stamford Ct, 06901 and drive you parade vehicle up Washington BLVD to Hoyt Street and over onto Bedford Street for Staging.

***START TIME IS 9:30 A.M. NO LATER.**

***ARRIVE AND STAGE EARLY**

*** Bathrooms in Police HQ**



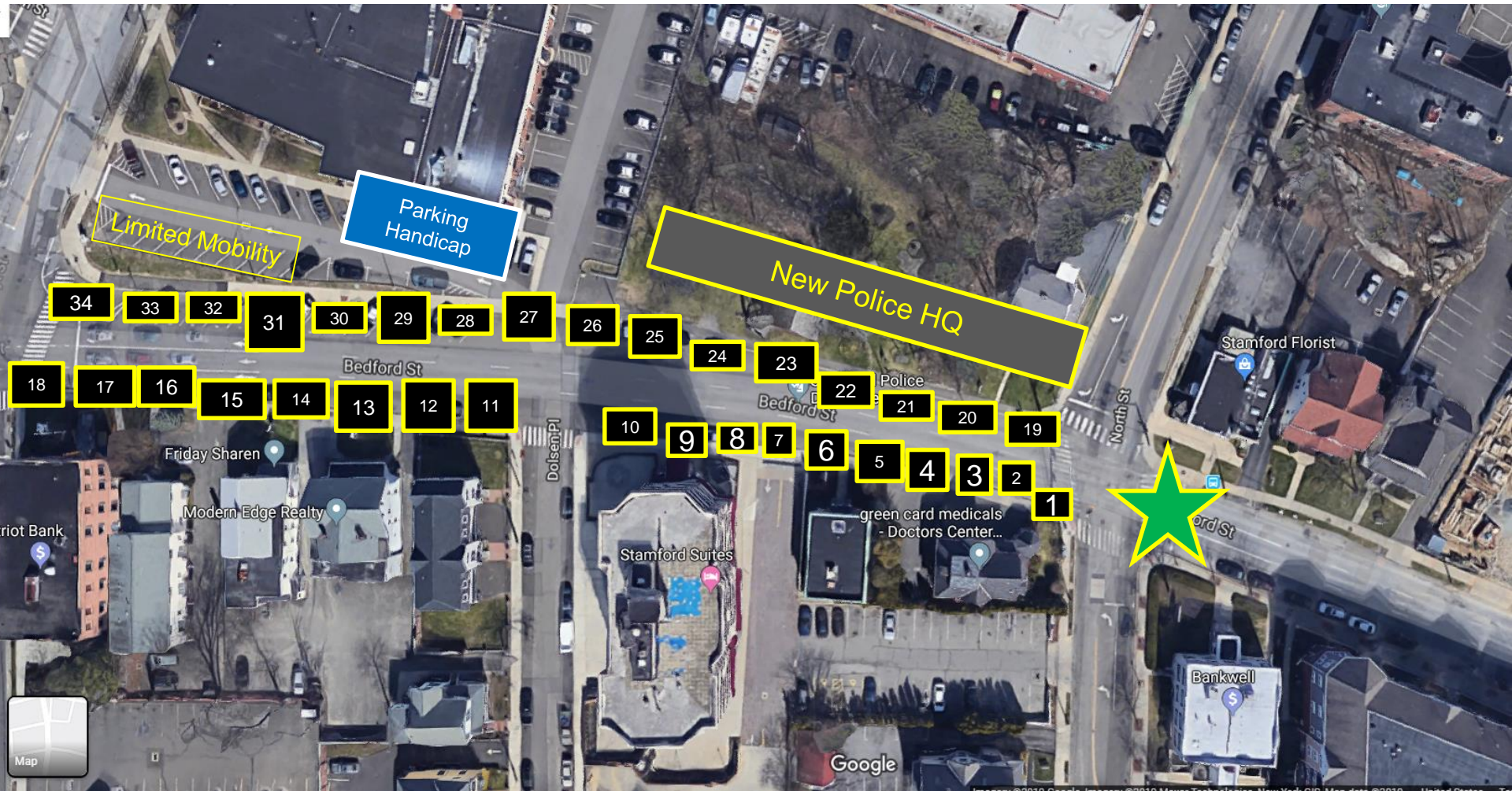
Lat Long

(41.059849, -73.537103)

GPS Coordinates

41° 3' 35.4564" N
73° 32' 13.5708" W

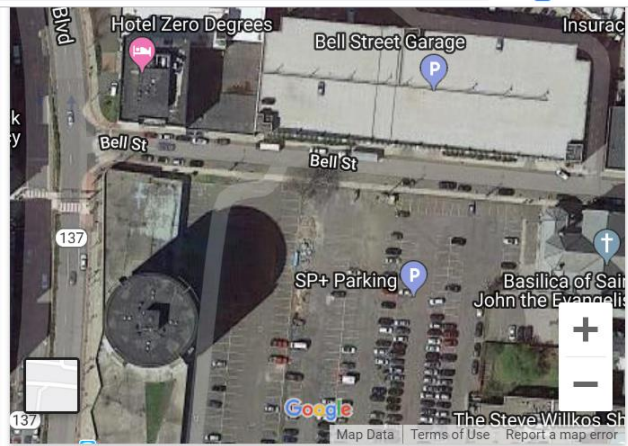
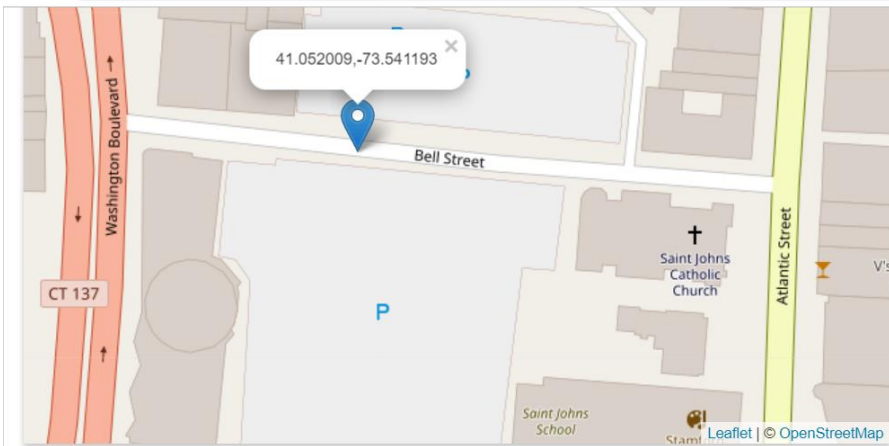
2019 Veterans Day Parade Staging



- | | | | |
|------------------------------|---|---|--------------------------|
| TBD: Policy Motorcycles | 11 American Legion (Peter Schinido HMWV) | 22 Hoop Girls | 33 Dolan Band |
| 1 City Honor Guards | 12 Shriners Train | 23 Scofield Band | 34 Shriners Motor Patrol |
| 2 SWAT Armored Vehicle | 13 Stamford High School Band | 24 Shriners WV Things | 35 TOR Band |
| 3 Fairfield Pipe & Drum | 14 CT Army National Guard Rec. | 25 Shriners P & D | 36 Sea Cadets |
| 4 Grand Marshal Jeep | 15 The Fox Radio | 26 Boy Scouts Troop 15 | 37 Cloonan |
| 5 Mayor & Dignitaries | 16 GSI WWII Jeep | 27 Jewish War Vets (Peter Schinido Jeep) | 38 Army JROTC |
| 6 KT Murphy Band | 17 Toquam Band | 28 Northeast/Stillmeadow Band | 39 Westhill Band |
| 7 Indeed Veterans Alliance | 18 Cub Scouts | 29 WEBE 104 | 40 SFD Truck One |
| 8 Springdale Band | 19 Davenport Band & Cheer | 30 Rippowam Band | |
| 9 Shriners Inflatable (Tall) | 20 VFW (Suburban & Trailer) | 31 Girl Scouts | |
| 10 Hart Band | 21 Westover Band | 32 U.S. Army Recruiters | |

Parade Units Arrive at Veterans Park





Lat Long

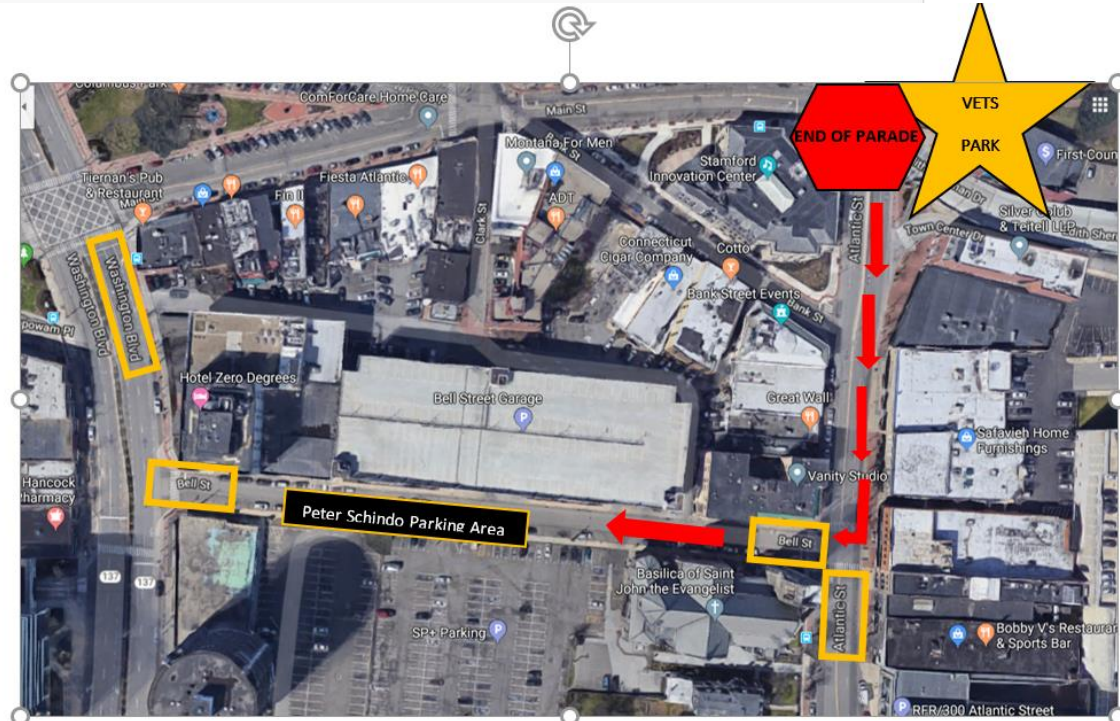
(41.052009, -73.541193)

GPS Coordinates

41° 3' 7.2324" N
73° 32' 28.2948" W

PARKING/STAGING FOR TRANSPORT TRAILERS

***If you are in need of a positioning location for your trailer/truck that has transported your parade or tactical vehicle the recommended location is **22 Bell Street Stamford CT, 06901**. The side streets across from the **Bell Street Parking Garage** will be posted as no parking to patrons so that you all may position your vehicles at this location.



SCHOOL UNITS PICK LOCATION

