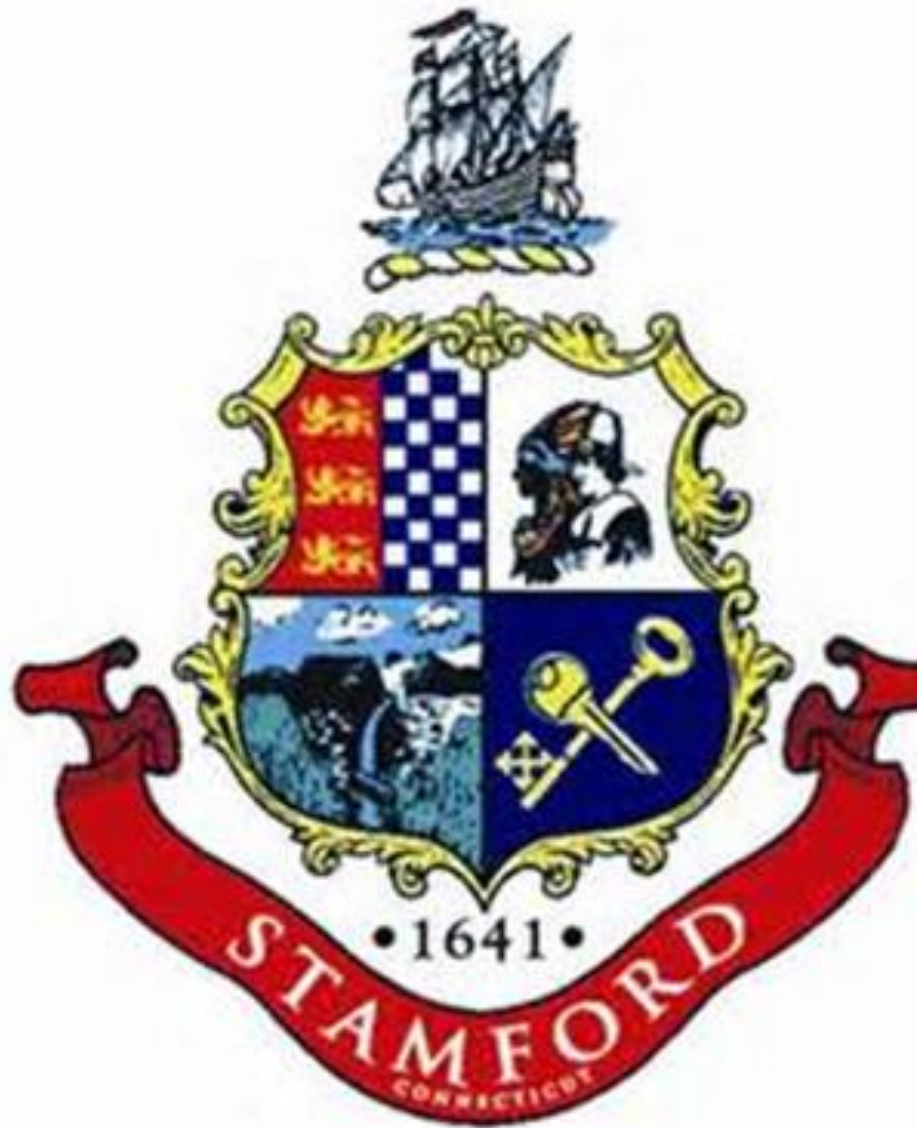


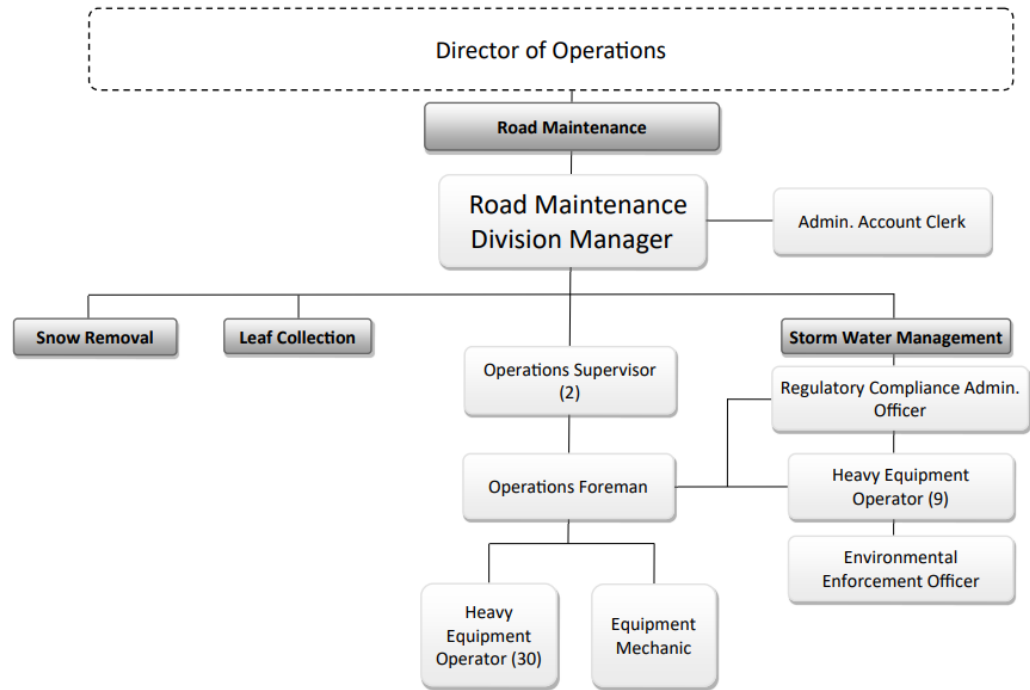
# CITY OF STAMFORD

## Road Maintenance Department w/ Stormwater

Thomas Turk  
Road Maintenance Division  
Manager  
tturk@stamfordct.gov  
3/6/2025



City of Stamford  
Office of Operations  
Road Maintenance



# Budget Summary (FY 2025-26)

## **Road Maintenance 2111 – No program expansions – same amount of manpower**

- 2111-519203 Seasonal – reduced by **\$2,800** – less need
- 2111-540601 Contracted Services – increased by **\$75,000** – for brush cutting contractor
- 2111-5404000 Equipment Rental – reduced by **\$1,905** – less need
- 2111-540611 – Software Maintenance - reduced by **\$12,500** – no longer run GPS, under Vehicle Maintenance
- 2111-560100 – Office Supplies & Expenses – increased by **\$2,000** – inflation

## **Leaf Collect 2113 – no changes – budget flat**

## **Snow Removal 2114 Salt & Sand – no changes – budget flat**

## **Stormwater 2116 – No program expansions – same amount of manpower – no changes**

### Capital

**C56182 Street Patch & Resurfacing - \$7,000,000 requested**

**CP8711 Utility Paving - \$1,500,000 requested**

## New or Expanded Services/Programs (FY 2025-26)

- Plans to use City contracted Landscaper to help with brush cutting up north in areas difficult for machine to fit and when machines not available.

## Key Challenges & Changes (FY 2025-26)

- This winter season has brought 16 snow/ice events. The last two seasons only had 5 events each. Season started during Leaf Pick-up program which is very difficult because same trucks are used for both programs. There were 6 snow/ice events during the Leaf Program.
- There was also a run of 6 snow/ice events within a 2 week period from February 9<sup>th</sup> through February 16<sup>th</sup> which puts a toll on the workforce, equipment and salt reserves.

## Performance Improvements & Efficiencies:

- More proactive in snow/ice storm response to get pre-treatment down across entire City before snow fall event which better helps prevent full icing and bonding of snow to the road. The layer of salt allows for the plows to better push off snow, especially in colder weather. This snow season brought 16 events from November to February and this method proved to be very effective.

Thank You!