

CITY OF STAMFORD  
WATER POLLUTION  
CONTROL AUTHORITY  
(SWPCA)

Presentation to:

BOARD OF  
REPRESENTATIVES  
FISCAL COMMITTEE

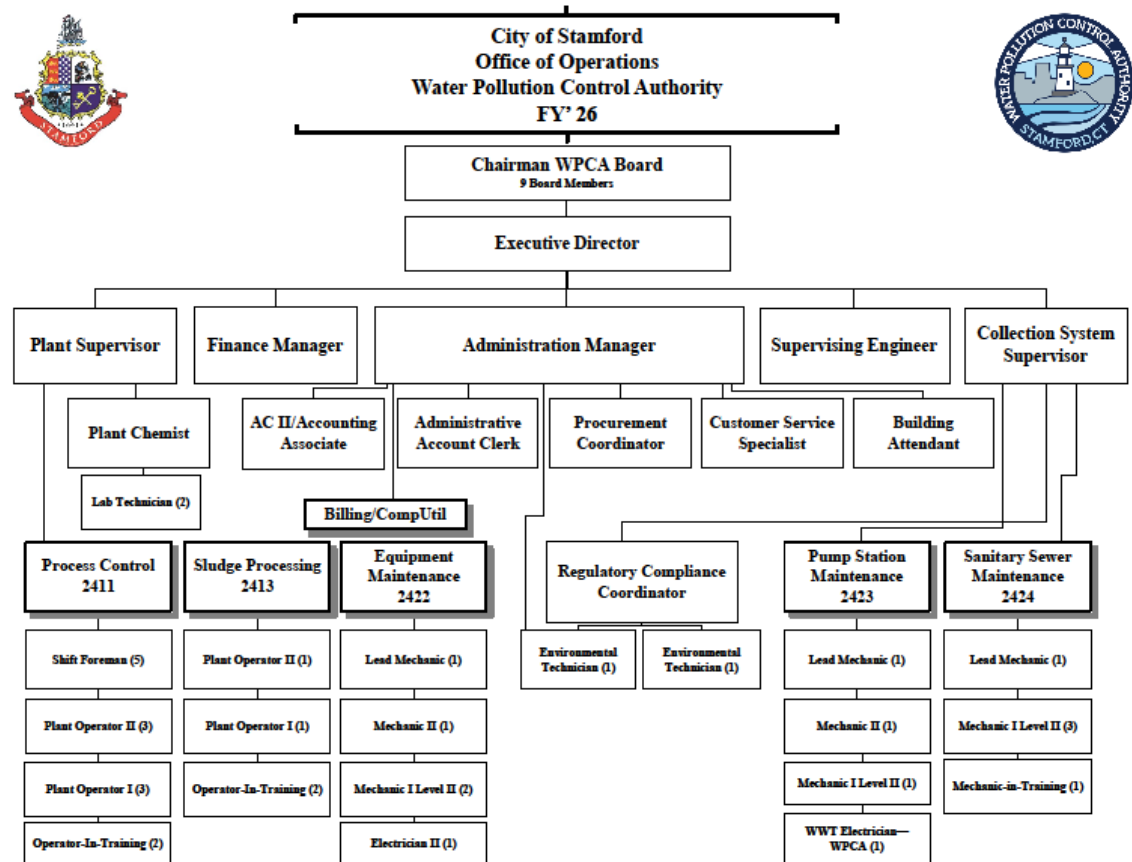
Bill Brink  
Executive Director

Rhudean Bull  
Administration Manager

Tuesday, March 18, 2025



# Department/Div. Organizational Chart



## Budget Summary (FY 2025-26)

- Total FY26 Expense Budget of \$28,923,297 (0% increase from FY25)
- Includes Debt Service (P&I) of \$6,802,114 (\$3,668,307 less than FY25)
- Includes a contribution to Capital Reserves of \$3,672,960

## Staffing Update (FY 2025-26)

- Total staff of 47 full time and 1 permanent part time (unchanged from FY25)
- Deleted Assistant Plant Supervisor which has remained unfilled for a few years.
- Changed Customer Services Specialist from Permanent Part Time to Full Time.
- Created a new position named Building Assistant who will be permanent part time.
- Positions whose responsibilities were changed which warranted an increase in pay grade:
  - Plant Supervisor
  - Collection System Supervisor
  - Plant Chemist
  - Procurement Coordinator
  - Administrative Account Clerk
  - Account Clerk II / Accounting Associate

## Significant Increases (Decreases) in Operating Expenses (FY 2025-26)

- Administrative salaries \$103,649 for Customer Services Specialist (PPT to FT), added Building Assistant (PPT), MAA and UAW contractual obligations.
- CERF/Pension UAL Amortization (\$87,535)
- Payments to Insurance Fund (\$83,704)
- Sewer Lateral Repairs in City ROW \$150,000 to be reimbursed by the City
- WPCF Electrical Use \$192,632
- Laboratory - Contracted Services \$100,000 software conversion for laboratory sample collection tracking, testing and reporting
- WPCF Equipment Maintenance Materials \$95,000 due to increased cost for equipment repairs, parts and materials
- Sludge Processing Contracted Services \$144,000 per contractual obligation
- Sludge Processing Natural Gas (\$208,085)

# Key Accomplishments In FY 2025

- Started construction of the Perna Lane Area Sanitary Sewer Project
- Completed the Upgrade of the WPCF Sludge Degritting System including new primary sludge pumps, scum pump, sludge degritting equipment, and replaced the equipment in Primary Settling Tank No. 1.
- Installed a new Supervisory Control and Data Acquisition (SCADA) system in five (5) pumping stations.
- Participated in Eversource's on demand load shedding program
- Participated in Strategic Energy Management with (3) other wastewater treatment facilities to find ways to reduce electrical energy use with the goal of reducing the WPCF's energy use by 5% in FY25.
- Transitioned from using methanol in the nitrogen removal process to using glycerin, which will allow the removal of fire fighting foam which contains PFAS, a harmful "forever chemical".

## Capital Project Requests for FY 2026

- **CP6904 WPCA Major Replacement \$600,000**
  - Recurring capital account to replace pumps, mixers, solids handling equipment, etc. as needed at the treatment plant.
  - To be funded by SWPCA's capital reserve fund.
- **001421 Alvord Lane & Commerce Dr Pump Stations Upgrades \$5,900,000**
  - Major upgrade of the Alvord Lane Pump Station and Commerce Drive Pump Station with new submersible pumps, electrical switchgear and building upgrades.
  - To be funded by SWPCA issued revenue bonds
- **CP4242 Sanitary Sewer Rehabilitation \$1,450,000**
  - Recurring capital account to replace or rehabilitate sanitary sewers and manholes found to have failed or have defects that allow excessive infiltration and inflow into the sewer system. Will also replace the 10 inch diameter force main from the Saddle Rock Pump Road Station.
  - To be funded by SWPCA's capital reserve fund.

Thank You!